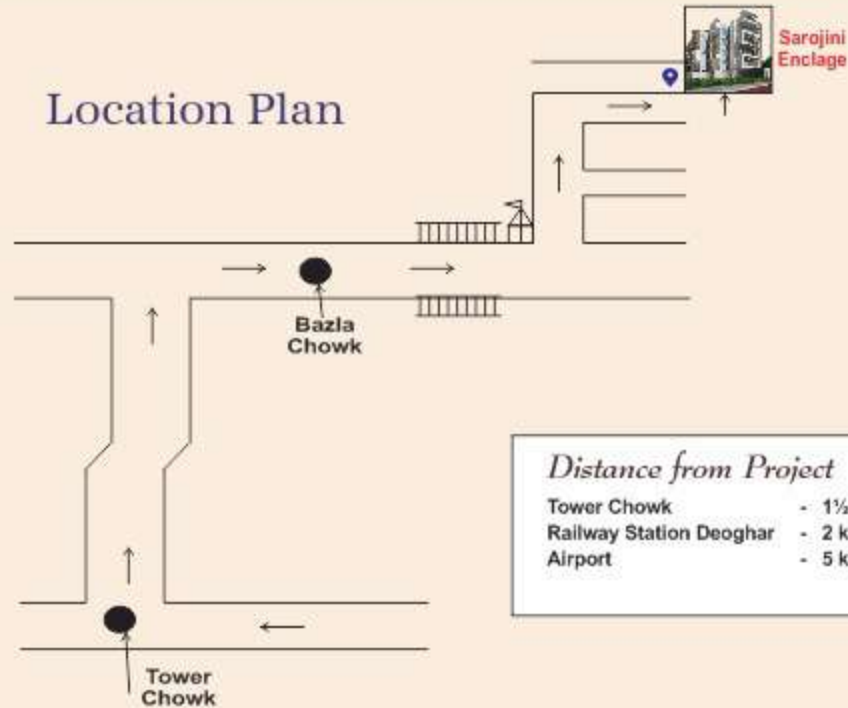


## Location Plan



## Payment Plan

Upon Booking	- 10%
First Installment	- 15% (Up to Plinth Work)
Second Installment	- 10% (After First Slab Casting)
Third Installment	- 10% (After Second Slab Casting)
Fourth Installment	- 10% (After Third Slab Casting)
Fifth Installment	- 10%
Sixth Installment	- 10%
Seventh Installment	- 20%
Eight Installment	- 05%

- Registration and govt. Taxes as applicable is to be paid by purchaser on registration.
- Other charges 4,00,000/- (Inclusive of one covered car parking & miscellaneous).
- Late payment charges @ 15% (P.A.) interest on due amount.
- Cancellation charges : 2% of total sale value.

### Address :

**M/S Maa Katyayani Carnation Buildcon Pvt. Ltd.**  
Bhagwat Nagar, Patel Seva Nagar (Bypass Road)  
Road No-2, Kankarbagh, Patna  
Contact : 9334118221, 9470281961, 9334098116

### Project Address

**Sarojini Enclave**  
Bumpass Town,  
Deoghar, Jharkhand

Note: All the building plans, layouts, specifications etc. are tentative and subject to variation and modification as may be decided by the architect / company. Accessories shown in the layout plan of the bungalow / flat such as photo, picture, screen furniture, electric appliances etc. purely indicated and not a part of the sale offering.

Designed & Ptd. by : Coin Computers, Patna-4 (9306621566)

# Sarojini ENCLAVE

Proposed Residential Apartment at Bumpass Town, Deoghar, Jharkhand

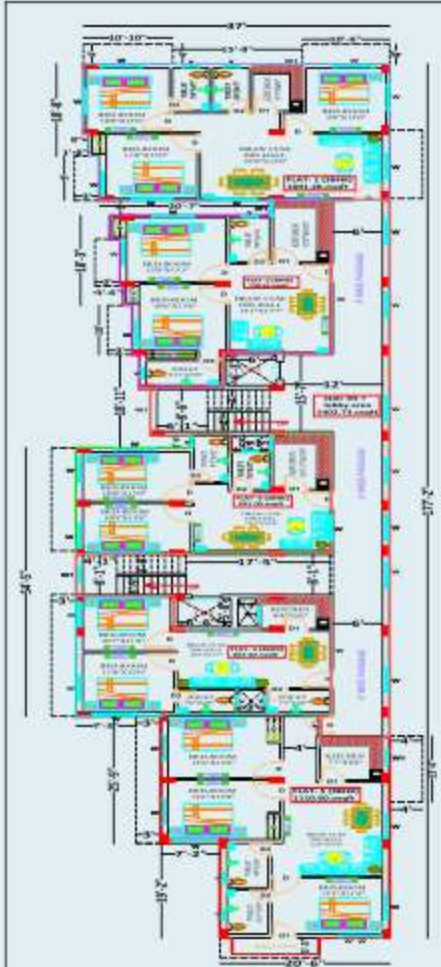
**SPACIOUS 2/3 BHK FLATS**

*It's a smart move with HomeSmart!*



**M/s Maa Katyayani Carnation Buildcon Pvt. Ltd.**

## 1<sup>st</sup> Floor Plan

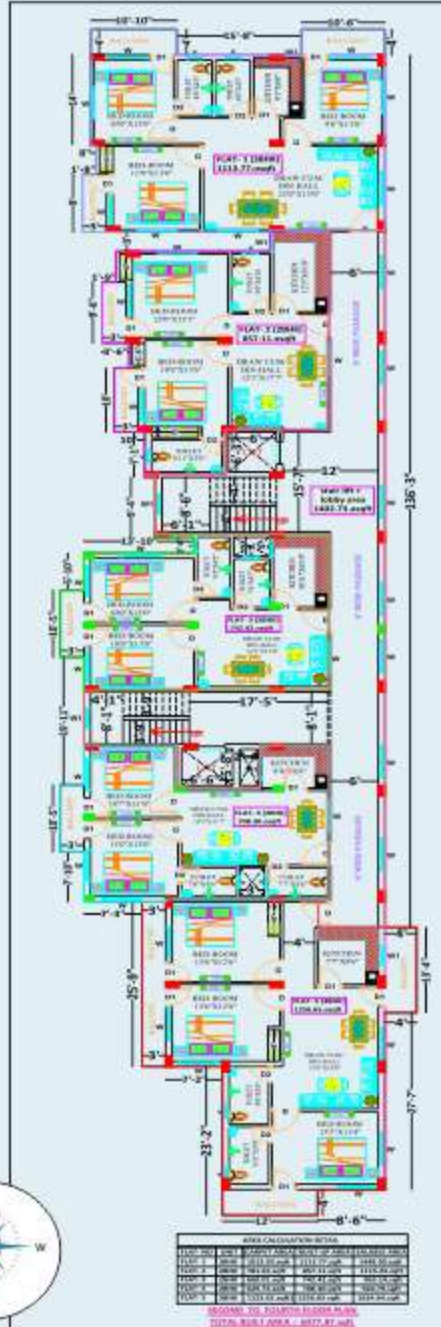


AREA CALCULATION DETAIL			
FLAT-NO	UNIT	CARPET AREA	BUILT UP AREA
FLAT-1	3BHK	893.65 sqft	1001.28 sqft
FLAT-2	2BHK	719.13 sqft	798.62 sqft
FLAT-3	2BHK	615.61 sqft	691.00 sqft
FLAT-4	2BHK	589.27 sqft	667.07 sqft
FLAT-5	3BHK	972.05 sqft	1110.60 sqft

**FIRST FLOOR PLAN**  
TOTAL BUILT AREA :- 5703.55 sqft



## 2<sup>nd</sup> Floor Plan



AREA CALCULATION DETAIL			
FLAT-NO	UNIT	CARPET AREA	BUILT UP AREA
FLAT-1	3BHK	893.65 sqft	1001.28 sqft
FLAT-2	2BHK	719.13 sqft	798.62 sqft
FLAT-3	2BHK	615.61 sqft	691.00 sqft
FLAT-4	2BHK	589.27 sqft	667.07 sqft
FLAT-5	3BHK	972.05 sqft	1110.60 sqft

GROUND TO SECOND FLOOR PLAN  
TOTAL BUILT AREA :- 5703.55 sqft



## Specifications

### Super Structure

Earthquake-Resistant RCC Frame Structure.

### Flooring

Vitrified tiles in drawing/ dining bedrooms and kitchen. Anti-skit ceramic tiles in toilet and Balcony

### Doors & Windows

Hardwood frames with flush doors and aluminum windows with grill & glass

### Kitchen

Granite top working platform. Stainless steel sink. Ceramic glazed tiles 2' above working platform.

### Bathroom

Anti-skit ceramic floor Tiles. Ceramic Tiles up to door level on the wall. Hot and cold water provision. Sanitary ware of standard make.

### Electrical

Concealed electrification with fire retardant cables & switches of ISI mark. Provision for adequate light, power points, T.V Points in living room and Master Bedrooms

### External Facade

Exterior wall with wall putty and weather coat paint

### Inside wall finish

Inside wall with wall putty.

### Lift

2 Lifts of 5 Passengers capacity each will be installed.

## Amenities

- ☑ The project welcomes you with modern & elegant elevation.
- ☑ Technically designed to assure natural light and fresh air
- ☑ Greenery along boundary wall
- ☑ Round the Clock security with manned security cabin and CCTV facility.
- ☑ Exclusive entrance gate & designer compound wall for the project.
- ☑ Ample car parking at Ground Floor.
- ☑ 24 hrs. Power backup 1 kw.
- ☑ Fire -fighting arrangements.
- ☑ Rain water harvesting.
- ☑ Internal parking and outer Pathway with paver blocks.
- ☑ Elegant entrance lobby with name board.



24x7 Power Backup



Fire fighting Equipment



Rain water Harvesting



CCTV