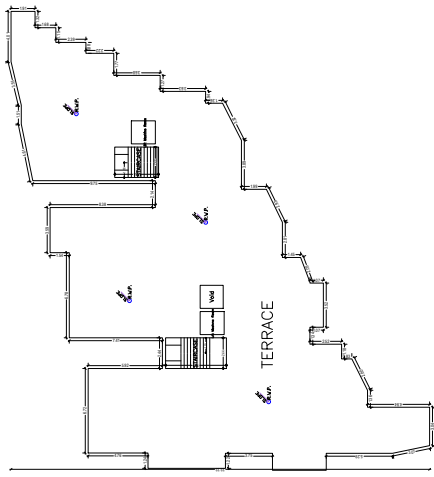
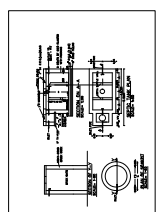
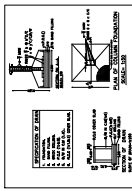
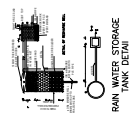
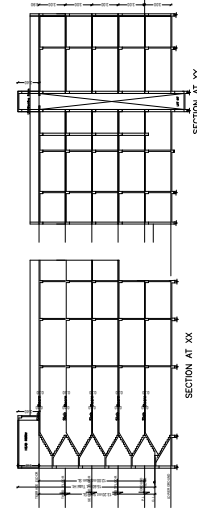


LOWER GROUND FLOOR PLAN (SCALE 1:100)

GROUND FLOOR PLAN (SCALE 1:100)



TERRACE FLOOR PLAN (SCALE 1:100)



**Material Schedule (7)**

Sl. No.	Material Name	Quantity	Unit
1	Concrete	1000	m <sup>3</sup>
2	Brick	5000	m <sup>2</sup>
3	Steel	100	kg
4	Paint	50	liters
5	Plaster	2000	m <sup>2</sup>
6	Roofing	1000	m <sup>2</sup>
7	Windows	100	nos
8	Doors	50	nos
9	Sanitary	100	nos
10	Electrical	1000	nos
11	Water	1000	nos
12	Plumbing	1000	nos
13	Roofing	1000	m <sup>2</sup>
14	Roofing	1000	m <sup>2</sup>
15	Roofing	1000	m <sup>2</sup>
16	Roofing	1000	m <sup>2</sup>
17	Roofing	1000	m <sup>2</sup>
18	Roofing	1000	m <sup>2</sup>
19	Roofing	1000	m <sup>2</sup>
20	Roofing	1000	m <sup>2</sup>
21	Roofing	1000	m <sup>2</sup>
22	Roofing	1000	m <sup>2</sup>
23	Roofing	1000	m <sup>2</sup>
24	Roofing	1000	m <sup>2</sup>
25	Roofing	1000	m <sup>2</sup>
26	Roofing	1000	m <sup>2</sup>
27	Roofing	1000	m <sup>2</sup>
28	Roofing	1000	m <sup>2</sup>
29	Roofing	1000	m <sup>2</sup>
30	Roofing	1000	m <sup>2</sup>

**Material Schedule (8)**

Sl. No.	Material Name	Quantity	Unit
1	Concrete	1000	m <sup>3</sup>
2	Brick	5000	m <sup>2</sup>
3	Steel	100	kg
4	Paint	50	liters
5	Plaster	2000	m <sup>2</sup>
6	Roofing	1000	m <sup>2</sup>
7	Windows	100	nos
8	Doors	50	nos
9	Sanitary	100	nos
10	Electrical	1000	nos
11	Water	1000	nos
12	Plumbing	1000	nos
13	Roofing	1000	m <sup>2</sup>
14	Roofing	1000	m <sup>2</sup>
15	Roofing	1000	m <sup>2</sup>
16	Roofing	1000	m <sup>2</sup>
17	Roofing	1000	m <sup>2</sup>
18	Roofing	1000	m <sup>2</sup>
19	Roofing	1000	m <sup>2</sup>
20	Roofing	1000	m <sup>2</sup>
21	Roofing	1000	m <sup>2</sup>
22	Roofing	1000	m <sup>2</sup>
23	Roofing	1000	m <sup>2</sup>
24	Roofing	1000	m <sup>2</sup>
25	Roofing	1000	m <sup>2</sup>
26	Roofing	1000	m <sup>2</sup>
27	Roofing	1000	m <sup>2</sup>
28	Roofing	1000	m <sup>2</sup>
29	Roofing	1000	m <sup>2</sup>
30	Roofing	1000	m <sup>2</sup>

**Material Schedule (9)**

Sl. No.	Material Name	Quantity	Unit
1	Concrete	1000	m <sup>3</sup>
2	Brick	5000	m <sup>2</sup>
3	Steel	100	kg
4	Paint	50	liters
5	Plaster	2000	m <sup>2</sup>
6	Roofing	1000	m <sup>2</sup>
7	Windows	100	nos
8	Doors	50	nos
9	Sanitary	100	nos
10	Electrical	1000	nos
11	Water	1000	nos
12	Plumbing	1000	nos
13	Roofing	1000	m <sup>2</sup>
14	Roofing	1000	m <sup>2</sup>
15	Roofing	1000	m <sup>2</sup>
16	Roofing	1000	m <sup>2</sup>
17	Roofing	1000	m <sup>2</sup>
18	Roofing	1000	m <sup>2</sup>
19	Roofing	1000	m <sup>2</sup>
20	Roofing	1000	m <sup>2</sup>
21	Roofing	1000	m <sup>2</sup>
22	Roofing	1000	m <sup>2</sup>
23	Roofing	1000	m <sup>2</sup>
24	Roofing	1000	m <sup>2</sup>
25	Roofing	1000	m <sup>2</sup>
26	Roofing	1000	m <sup>2</sup>
27	Roofing	1000	m <sup>2</sup>
28	Roofing	1000	m <sup>2</sup>
29	Roofing	1000	m <sup>2</sup>
30	Roofing	1000	m <sup>2</sup>

**Material Schedule (10)**

Sl. No.	Material Name	Quantity	Unit
1	Concrete	1000	m <sup>3</sup>
2	Brick	5000	m <sup>2</sup>
3	Steel	100	kg
4	Paint	50	liters
5	Plaster	2000	m <sup>2</sup>
6	Roofing	1000	m <sup>2</sup>
7	Windows	100	nos
8	Doors	50	nos
9	Sanitary	100	nos
10	Electrical	1000	nos
11	Water	1000	nos
12	Plumbing	1000	nos
13	Roofing	1000	m <sup>2</sup>
14	Roofing	1000	m <sup>2</sup>
15	Roofing	1000	m <sup>2</sup>
16	Roofing	1000	m <sup>2</sup>
17	Roofing	1000	m <sup>2</sup>
18	Roofing	1000	m <sup>2</sup>
19	Roofing	1000	m <sup>2</sup>
20	Roofing	1000	m <sup>2</sup>
21	Roofing	1000	m <sup>2</sup>
22	Roofing	1000	m <sup>2</sup>
23	Roofing	1000	m <sup>2</sup>
24	Roofing	1000	m <sup>2</sup>
25	Roofing	1000	m <sup>2</sup>
26	Roofing	1000	m <sup>2</sup>
27	Roofing	1000	m <sup>2</sup>
28	Roofing	1000	m <sup>2</sup>
29	Roofing	1000	m <sup>2</sup>
30	Roofing	1000	m <sup>2</sup>