

JAIWANTI ENCLAVE

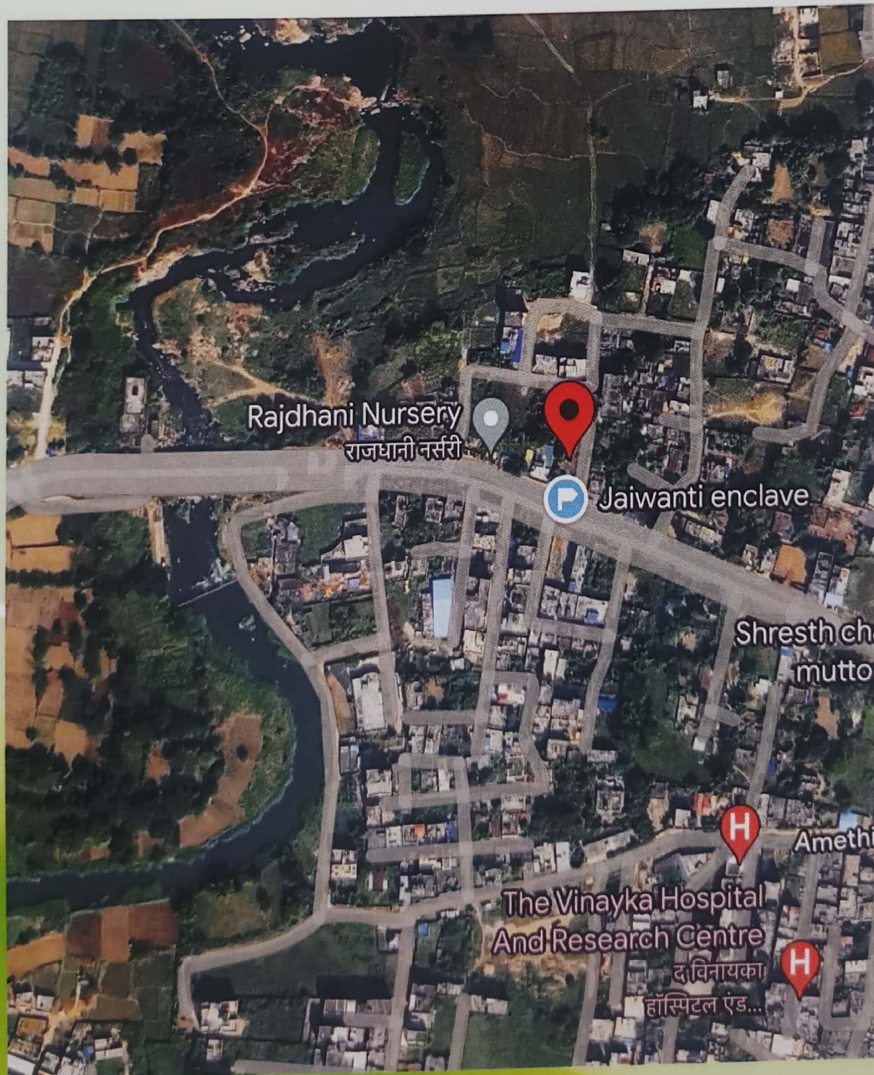


Unless the Lord builds the house, its builders labour in vain. Psalms. 127:1

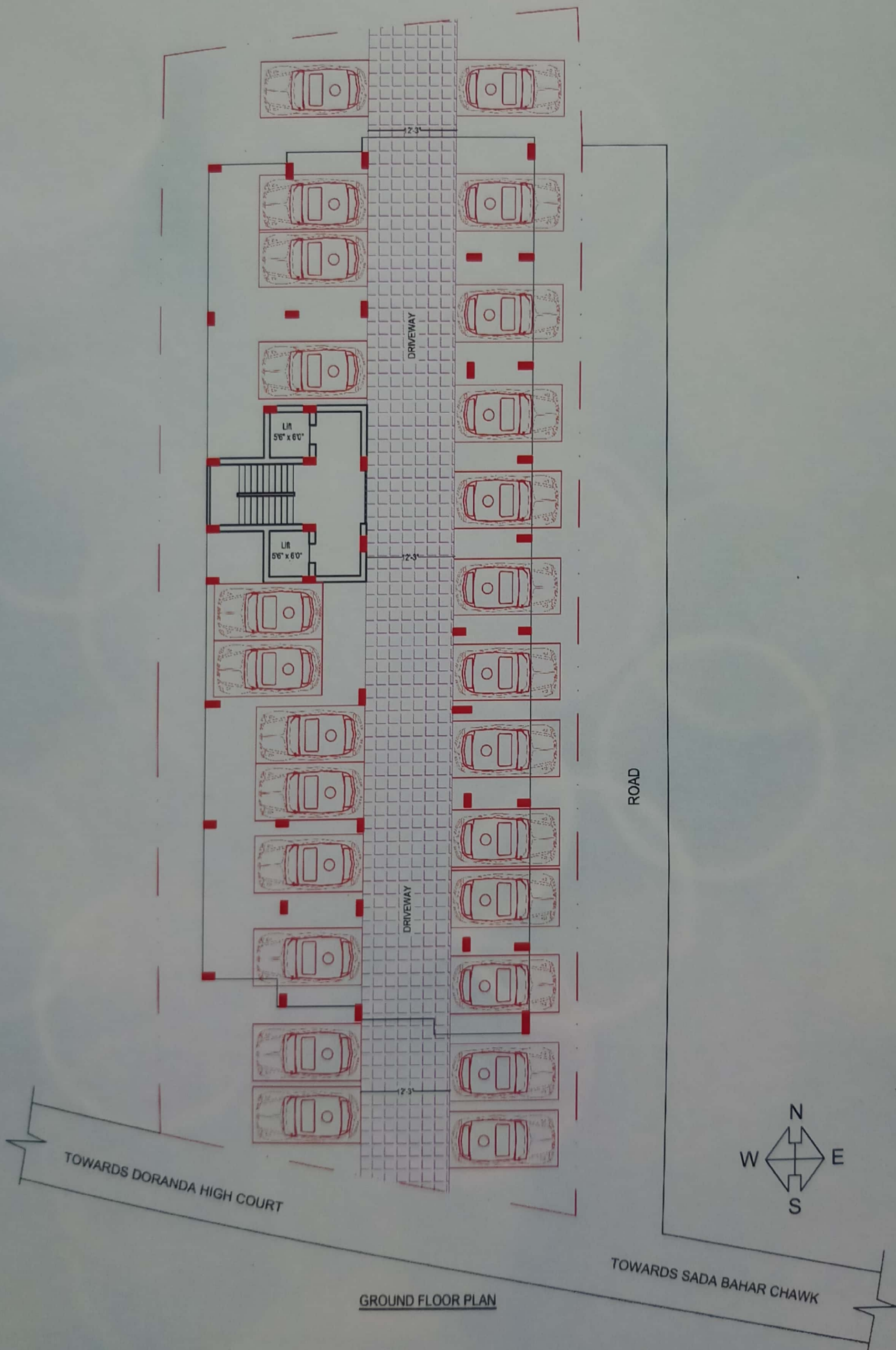
Jaiwanti Enclave

Jaiwanti Enclave, the beautiful expression of the ever propelling passion and ever resounding reverent tribute, the project of M/s Tirkey construction, is located at Mahuwa Toli, Namkom, Ranchi. Situated at the heart of city and with easy access to all services and amenities is an ideal place to house your Sweet Home from Ranchi Airport 9.2 Km and Ranchi Railway Station 6.4 Km. We assure you, there will be no regret for those who relate to us through this housing project.

LOCATION MAP



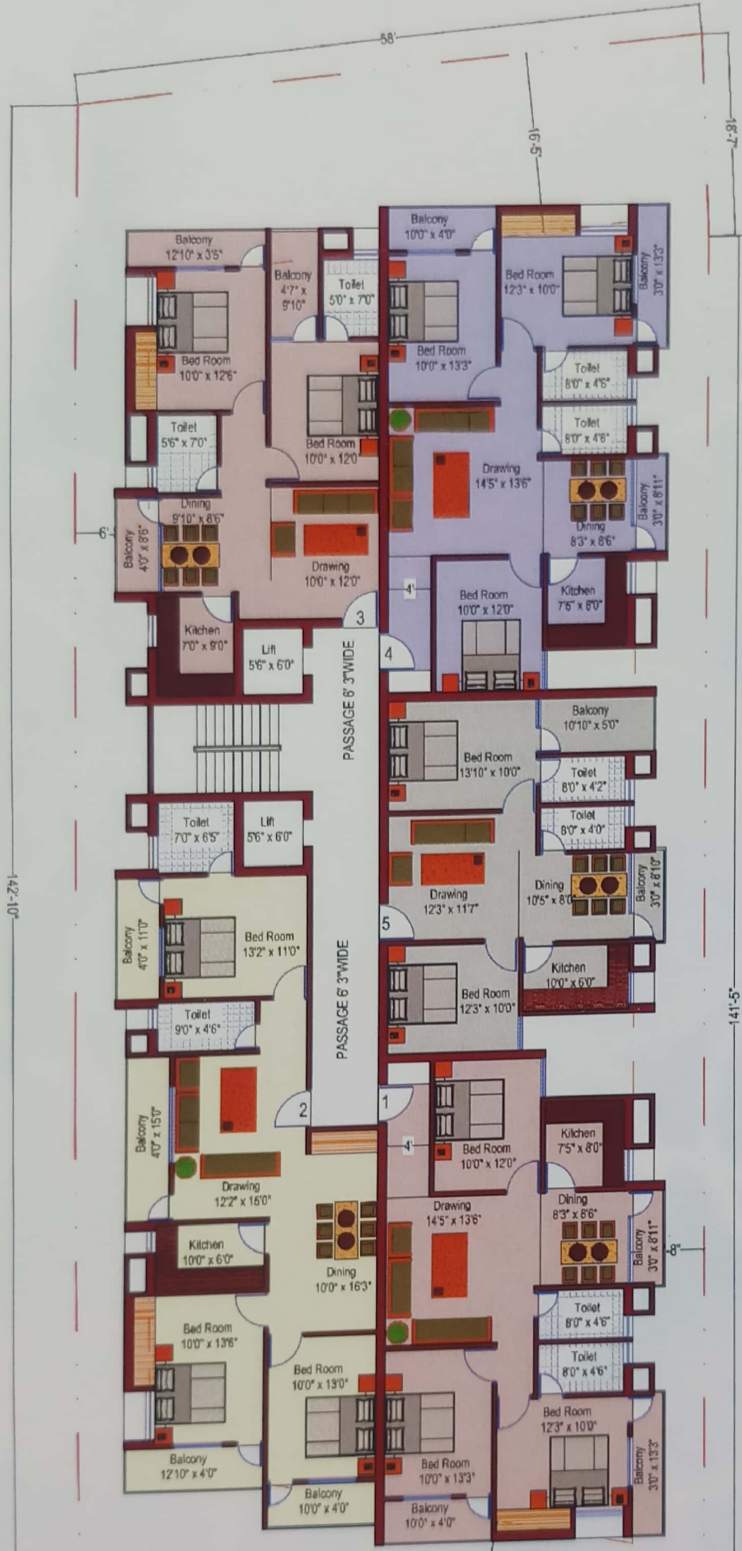
GROUND FLOOR PARKING



GROUND FLOOR PLAN



TYPICAL 1st TO 4th FLOOR PLAN



TYPICAL 1ST TO 4TH FLOOR PLAN
 one floor area=5600 sft



TOWARDS DORANDA HIGH COURT

TOWARDS SADA BAHAR CHAWK

TYPICAL 1st to 4th FLOOR Plan

| No. | Flat | Super B/U Area |
|------------|-------------|-----------------------|
| 1. | 3 B.H.K. | 1345 sq. ft. |
| 2. | 3 B.H.K. | 1575 sq. ft. |
| 3. | 2 B.H.K. | 1095 sq. ft. |
| 4. | 3 B.H.K. | 1340 sq. ft. |
| 5. | 2 B.H.K. | 980 sq. ft. |

SPECIFICATIONS

| | |
|-------------------|---|
| Foundation | RCC flooring and columns with anti-termite treatment in foundation and plinth |
| Structure | RCC frame structure using Lafarge / ACC Cement and TATA TISCON 500 TMT / SAIL with Blue / black chips |
| Walls Finish | Cement-Sand (1:6) plaster, internal wall Putty finished with one coat of primer |
| Wall Painting | Rustic on Outer Walls and finish with one coat of primer and two coats of Asianpaint, Staircase wall Putty & finish with Primer & Paint |
| Flooring | 2'x2' Vitrified Tiles in Rooms, Kota Stones in Stairs and Corridors |
| Doors & Windows | Sal Wood Door-frame & Flush Door, Fancy-finish on front door. Aluminum Sliding Windows with black glass & Grill. Almn. Door in Bathrooms. |
| Kitchen | Granite counter top with glazed tiles on wall up to 4' above slab with all standard provisions and 2'x2' flooring, Hot and Cold water point, Power outlet for Geyser and mixer-grinder/Oven. |
| Toilets | Anti-skid tiles flooring and glazed tiles on walls up to 7' height. Hot and Cold Water connection with mixer tap, Wash-basin and one extra water point with power outlets for Geyser and washing machine. |
| Sanitary Fittings | Standard vitrified ISI Mark Commode in attached toilet and Indian type pan on the other toilet and wash-basin. |
| Electrical | Concealed wiring with ISI mark wire, switches and sockets. |
| Water Supply | 2 nos. of 4" diameter Bore-wells with overhead water tank |
| Lift | Best quality ISI mark Automatic lift available in Market at the time of installation. |
| Grills/Railings | Stainless Steel Railing on all balconies and staircase. |
| Generator | ISI Mark Soundless Generator of adequate Capacity |



For Booking Please Contact

TIRKEY CONSTRUCTION

New Garden Siromtoli, Club Road, Ranchi - 834001

Cell : 8797613845, 8789684203, 9835116374

E-mail : tirkey.construction@gmail.com

