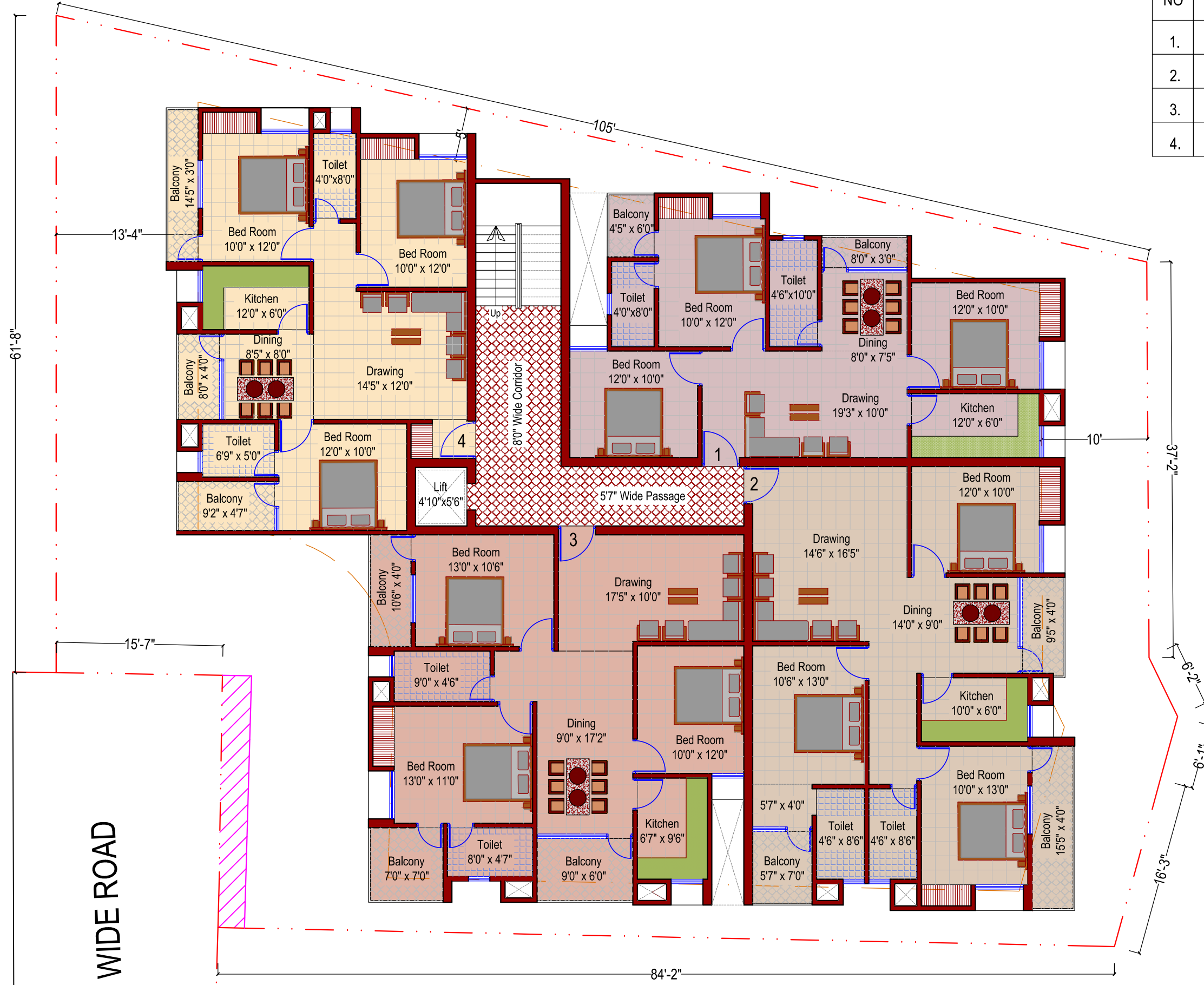
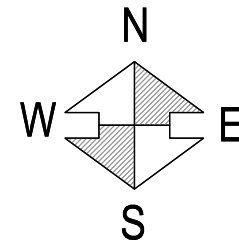


NO	FLAT	CARPET AREA	B/U AREA	SUPER B/U AREA	SHARE OF LAND
1.	1 3 B.H.K.	815. sq. ft.	930. sq. ft.	1165. sq. ft.	509. sq. ft.
2.	2 3 B.H.K.	998. sq. ft.	1210. sq. ft.	1515. sq. ft.	662. sq. ft.
3.	3 3 B.H.K.	948. sq. ft.	1160. sq. ft.	1450. sq. ft.	634. sq. ft.
4.	4 3 B.H.K.	830. sq. ft.	1015. sq. ft.	1270. sq. ft.	555. sq. ft.



20' WIDE ROAD

**TYPICAL 1ST TO 3RD FLOOR PLAN**  
One Floor Built Up Area - 4755.00 Sq.Ft.



PROJECT :-  
**Proposed Residential Building. (G+3)**  
AT :- Hesag,Ranchi.

CLIENT :-  
**VISHAL WADWANI.**  
AT:- Ranchi.

Date :- 15.3.22

**grids consultants**  
architect,engineer,intenor,landscaping,vaastu.  
2nd FL,ROSHPA TOWERS, MAIN ROAD,RANCHI  
PH:2330258,E-mail: grids\_con@yahoo.com