



SHREE RAM HEIGHTS

Opp Nandan Enclave, Gurudwara Road,
Hatia, Ranchi - 834003, Jharkhand

A Project of

Rudra Syndicate Projects Pvt. Ltd.

Contractor & Developer

A Promish That Never Be Broken
Best Flat At Lowest Price

BOOKING
IN
FULL SWING

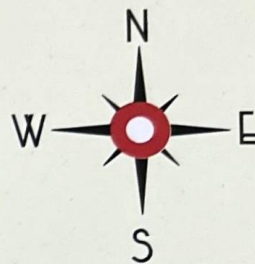
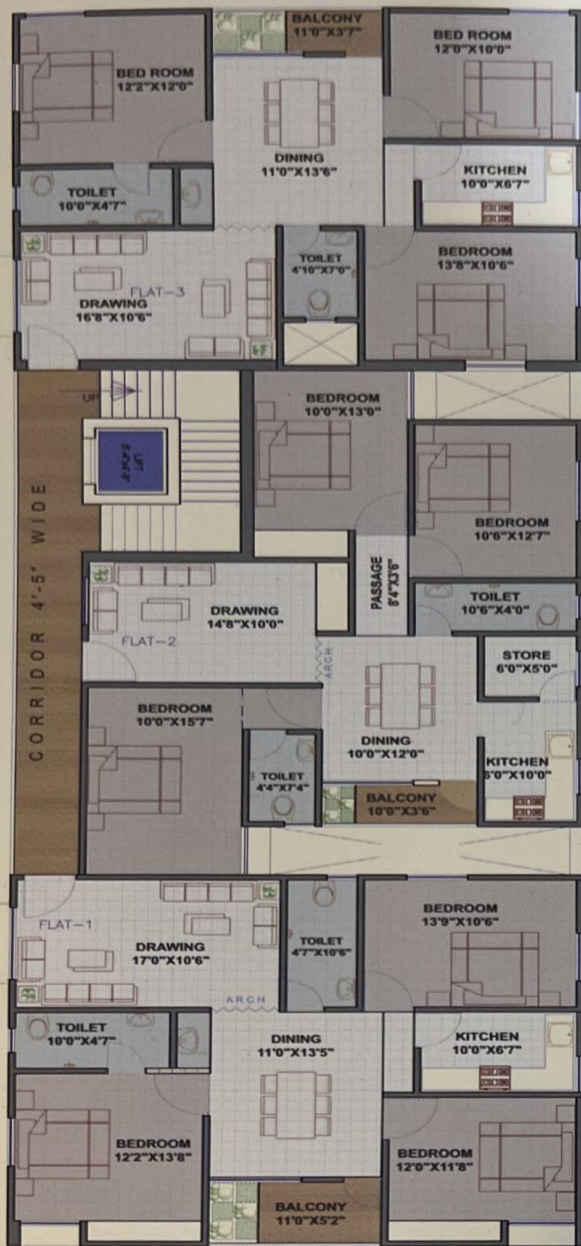
G+4
3 BHK Luxury Flats

RMC
APPROVED

Floor Plan

First Floor Plan

Second, Third & Forth Floor Plan



**BOOKING
IN
FULL SWING**

AREA STATEMENT 1st FLOOR PLAN

AREA STATEMENT 2nd, 3rd, 4th FLOOR PLAN

FLAT	C. AREA	B. AREA	S. B. AREA	UNIT
01	966.0 SQ.FT.	1115.0 SQ.FT.	1338.0 SQ.FT.	3BHK
02	930.0 SQ.FT.	1063.0 SQ.FT.	1276.0 SQ.FT.	3BHK
03	910.0 SQ.FT.	1046.0 SQ.FT.	1255.0 SQ.FT.	3BHK

FLAT	C. AREA	B. AREA	S. B. AREA	UNIT
01	1030.0 SQ.FT.	1317.0 SQ.FT.	1580.0 SQ.FT.	3BHK
02	930.0 SQ.FT.	1150.0 SQ.FT.	1380.0 SQ.FT.	3BHK
03	1013.0 SQ.FT.	1310.0 SQ.FT.	1572.0 SQ.FT.	3BHK

Amenities

- Technically designed for natural sunlight and fresh air ventilation
- 24 hrs. power backup for Lift & all common area & 24 hrs security also
- Plan approved by concerned department with Open area
- Temple, School, ATM & Medical Facility Near the Project
- **Housing Loan**
- Finance facility available from all leading banks

Taxes & Other Charges

(Extra As per Govt. Norms)

1. GST
2. Registration charges
3. Other as applicable

Parking, Generator, Electricity, Lift - 3,00,000/- (Extra Cost)



Rudra Syndicate Projects Pvt. Ltd. is a trusted name in the real estate sector of Jharkhand. The company takes care in ensuring that its projects feature perfect vastu and a clear title so as to give buyers a hassle-free and happy ownership. Today' owning an Rudra Syndicate Projects Pvt. Ltd. is associated with prestige.

we are a specialized construction company in Jharkhand. We provide high level of quality in all project. Company operates as an independent entity supported by a dedicated team of accomplished professionals. That ensure complete customer satisfaction.

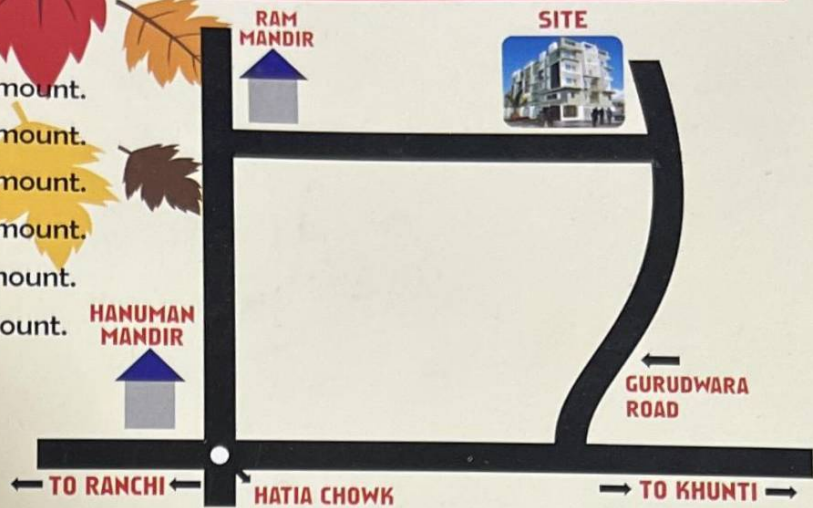
Specification

Structure	: R.C.C. framed structure with Red bricks work in cement as per design & Specification of structure consultant.
Chaukhat	: Wooden Door frame (Chaukhat)
Door	: Flush door shutter of main 32/rest 30mm thick ISI Mark painted with 2 coats synthetic Enamel paints over a coat of primer.
Window	: Fully glazed three tracks Aluminim sliding windows.
Kitchen	: (a) Flooring - Vitrified Tiles (b) Working Platform - Granite (c) Dado - 24" height glazed tiles (d) Sink - Stainless Sink
Flooring	: (a) Flooring - Vitrified (b) Bathroom Wall - 7' glazed Tiles
Lift	: Six passenger manual lift (ISI)
Stair Landing & Steps	: Marble.
Electrical	: Concealed copper wiring Modular switches and Fittings of reputed brand (ISI Mark).
T.V / Tel Plug Point	: One TV/Tel. plug points provide in drawing room & M.B.R.
A.C. points	: One power plug point in each bedroom.
internal Wall Finish	: All internal wall shall be finished with smooth plaster of paris, a coat of Primer
External Wall Finish	: External wall finished with elevation design from weather coat paint.
C.P. Fitting	: Chromium plated fitting of reputed brand.
Sanitary Ware	: White sanitary ware fitting of reputed brand. All E.W.C. pan in M.B.R. toilet
Generator Set	: 500W power back - up to each flat & 24 hours power supply for lift.
Parking	: Adequate space available at an extra cost.

Payment Plan

Booking	101,000/-
Agreement for sale	20% of the flat amount.
Commencement of Structure	20% of the flat amount.
Concerned Floor Casting	20% of the flat amount.
Brick work & Plastering	20% of the flat amount.
Flooring & Finishing	15% of the flat amount.
Before handover	5% of the flat amount.

Location Map



Our Other Running Project



AYUSH ENCLAVE
Obaria Road, Hatia, Jharkhand



RAJ LAXMI HEIGHTS
New Pundag, Ranchi, Jharkhand

Our Completed Project
SHIV GANGA ENCLAVE
Hatia, Near Ranchi --Khunti Highway



ARCHITECT :
SHAILESH VERMA
9835117282
Engineers Group
Near Sainik School, Bariatu



RUDRA SYNDICATE PROJECTS PVT. LTD.

📍 Near Hatia Chowk, Main Road, Hatia, Ranchi
☎ +91-9386366216, 9835894355
✉ rs.projects@refiffmail.com