

SPECIFICATION

FRAME STRUCTURE

RCC framed structured as design of the architect & structure engineer

RAILING

Balcony Stainless steel

KITCHEN

Flooring vitrified tiles, Working Platform Granite, Dado-Ceramic tiles upto 2' height, Sink Stainless Steel, Water Line CPVC Pipe

DINING ROOM

Wash basin

WALL FINISH

Internal putty with primer, External weather coat paint with rustic of standard quality

TOILETS

Sanitary Ware Jaguar / Equivalent
CP Fitting jaguar / Equivalent
Water Line CPVC Pipe line with hot and cold water supply

ELEVATOR

2 Nos of 6 passengers elevator

ELECTRICAL

Wiring Concealed electrical wiring of Polycab / Havells / Equivalent. Switches Modular switches of Anchor / Greatwhits / Equivalent

DOORS & WINDOWS

Main Door and Internal Doors Flush door with Door Screen. Door Fittings handles, door stoppers etc. Windows Three Track Aluminium Window

LOBBY / PASSAGE & STAIRS

Marble / Vitrified tiles

FLOORING INTERNAL

Bedroom Master Bedroom Vitrified tiles (2 ft. x 2 ft.)
Toilet Anti skid floor tiles
Dado Ceramic tiles upto lintel level
Drawing Room & Dining Room Vitrified tiles (2 ft. x 2 ft.)

COMMON FACILITIES

Generator : Sound proof Generator for common area, Lift, water motor and 500 watts for each flat.
Water 24x7 water supply through overhead tank from deep tube boring.
Water Harvesting : Rain Water harvesting

REGISTRATION

To be born by the purchaser



RAJDEEP ENCLAVE

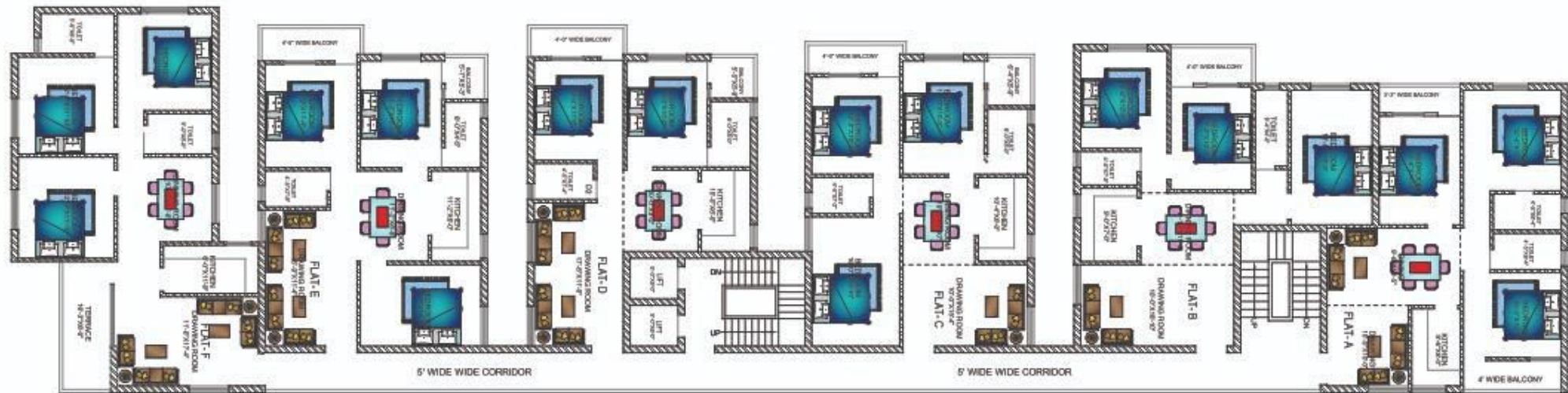


RAJ BUILDREER

Street No. 1, Lower Shukla Colony
Hinoo, Ranchi (Jharkhand)

Mob.: 09386598571
09304526591

2nd,3rd & 4th FLOOR PLAN



FLAT NO.	TYPE	BUILTUP AREA	S. BUILTUP AREA
A	3 BHK	1050 Sq.Ft.	1365 Sq.Ft.
B	3 BHK	1088 Sq.Ft.	1415 Sq.Ft.
C	3 BHK	1061 Sq.Ft.	1380 Sq.Ft.
D	2 BHK	905 Sq.Ft.	1177 Sq.Ft.
E	3 BHK	1080 Sq.Ft.	1405 Sq.Ft.
F	3 BHK	1205 Sq.Ft.	1560 Sq.Ft.