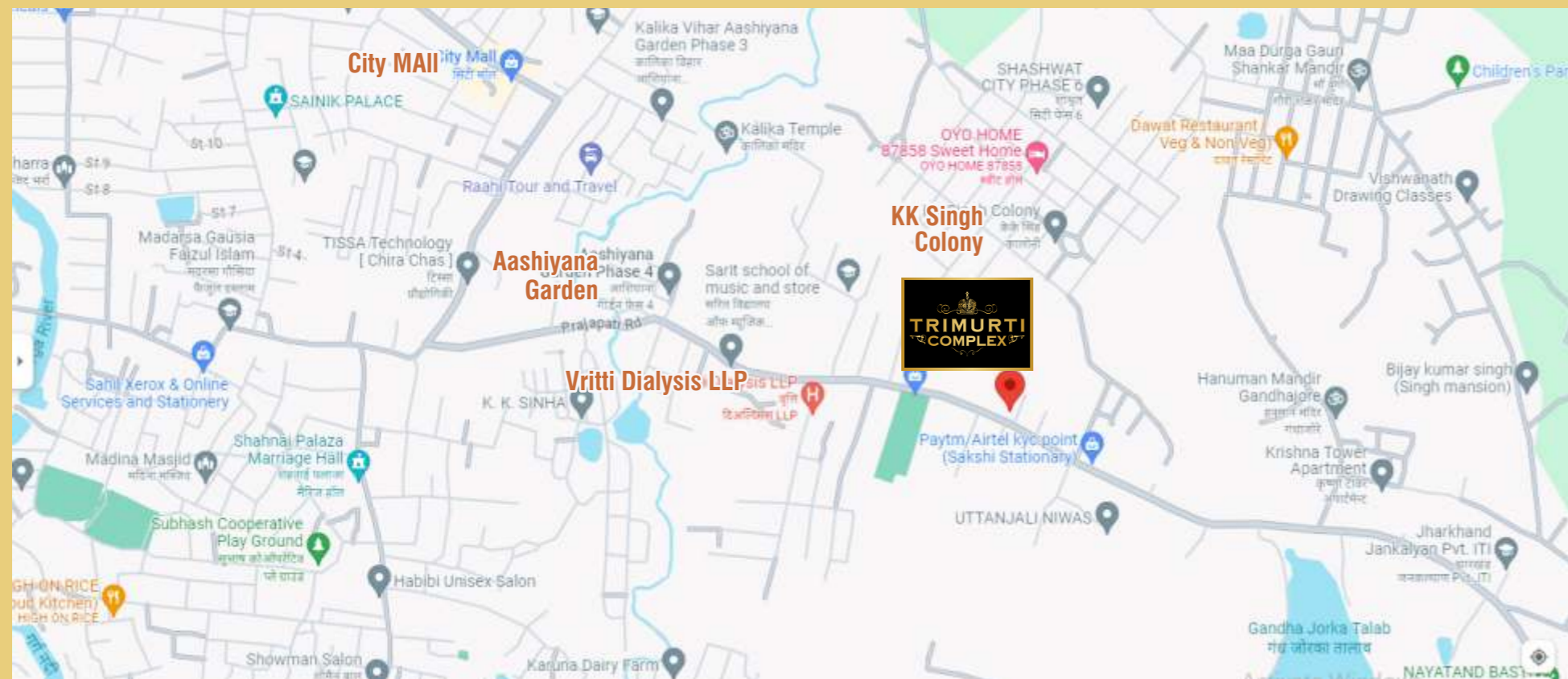


## LOCATION MAP



**A1 REALTECH**

OFFICE ADDRESS: RUKMANI DUPLEX - 1, OPPOSITE PRAJAPATI BHARAT PETROL PUMP, CHIRA CHAS, BOKARO - 827013  
SITE ADDRESS: CHIRA CHAS ROAD, OPP. SBI ATM, WARD 4, BOKARO - 827013

**For Bookings Call: +91 9386359955, 8877779192**

NOTE: This brochure is only a conceptual presentation of the project and not a legal offering. This promoters reserve the right to alter and make changes in elevations, amenities and features as deemed fit.

SCAN THE QR CODE  
FOR LOCATION



*Live your Dream...*



## About A1 Realtech

At A1 Realtech, we are passionate towards creation of aspirational yet functional homes; contemporary yet soulful. The organization aims at providing homes that will be rewarding assets for the new age Indians who are striving for international quality of life.

A1 Realtech aims at developing townships with best limited flats and duplexes avoiding over gathering and expansion. We focus on the location of project and quality of material used in the project. The location advantage of project is greatest and finest.

A1 Realtech aims at developing a society which has much more for a beautiful family where there is ample space and refreshment for kids, younger and elder ones. A1 Realtech endeavors to become a developer by providing the maximum value for its clients, employees and investors.



## About the project

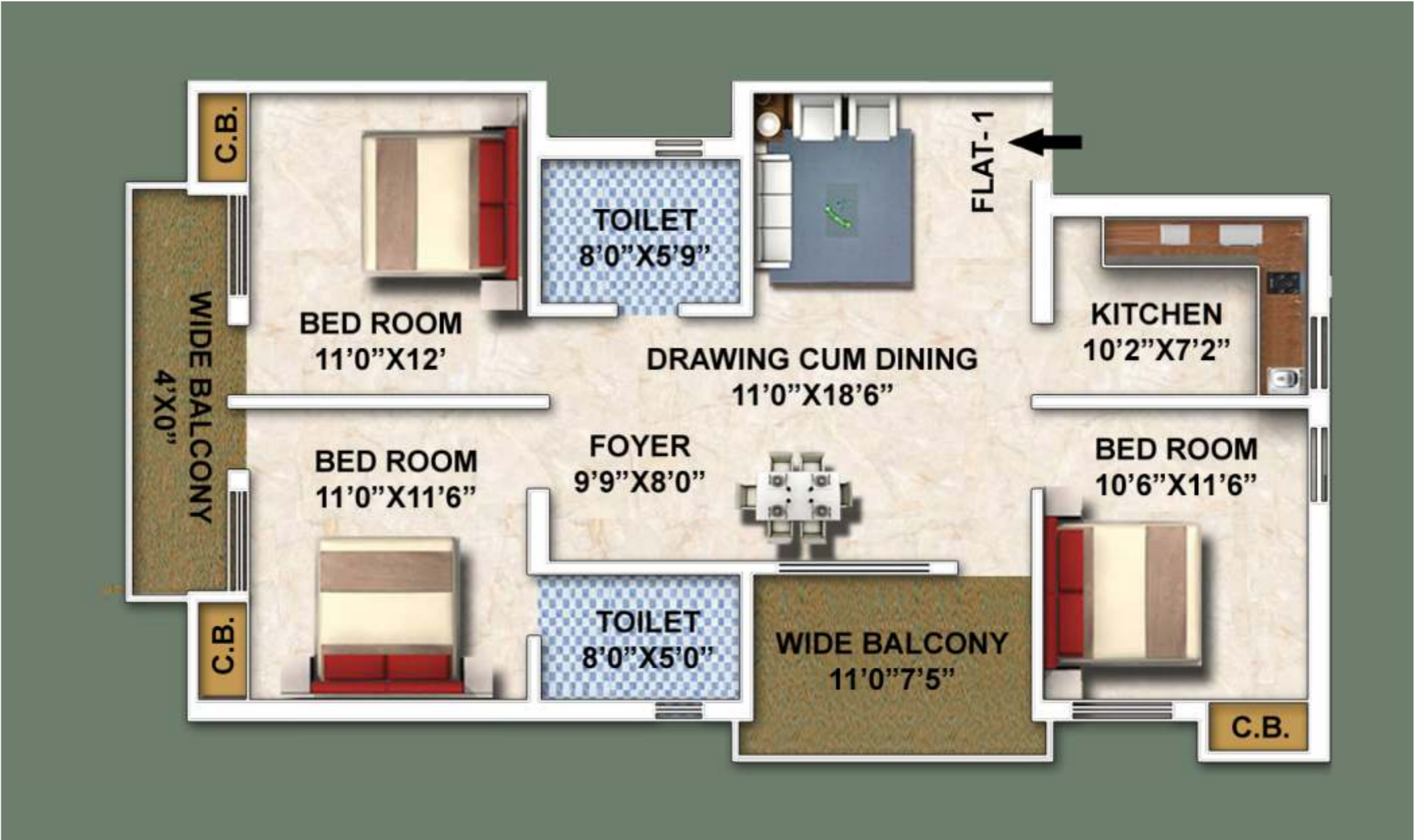
Welcome to Trimurti Complex led by A1 Realtech [exclusive marketing partner]- a premium housing society of duplex and residential apartments. It's a premium society with duplexes and residential flats. This project is widespread in 1.5 acres land area where there is ample space for temple, garden, kids play zone, jogging track, 24x7 security and CCTV surveillance adds to the safety of the society.

Trimurti Complex is adjacent to the largest institutional hub of Jharkhand, adjacent to residential sectors of Bokaro. Best school, highways, market and hospitals are located within few kilometers of radius.

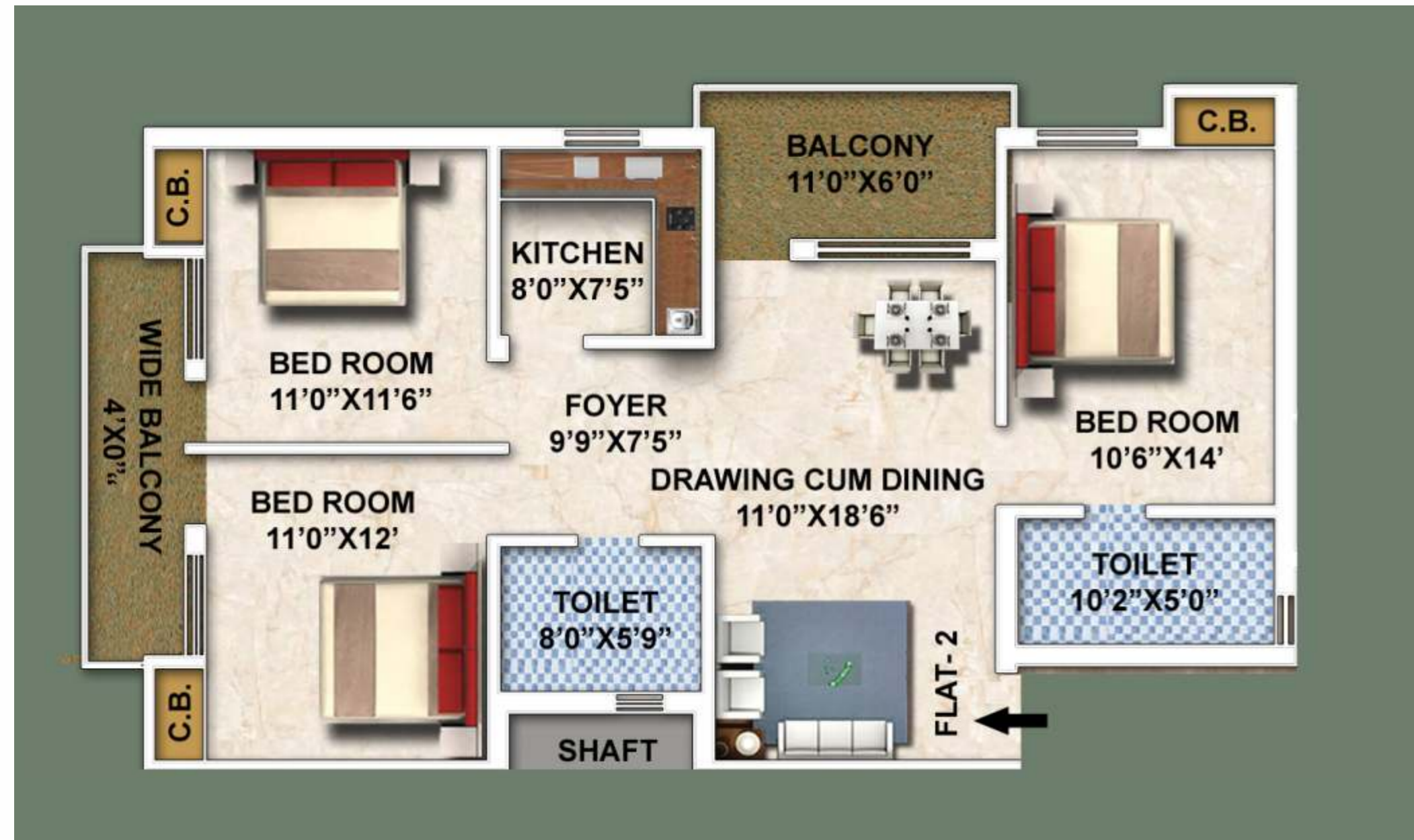
## Project Layout



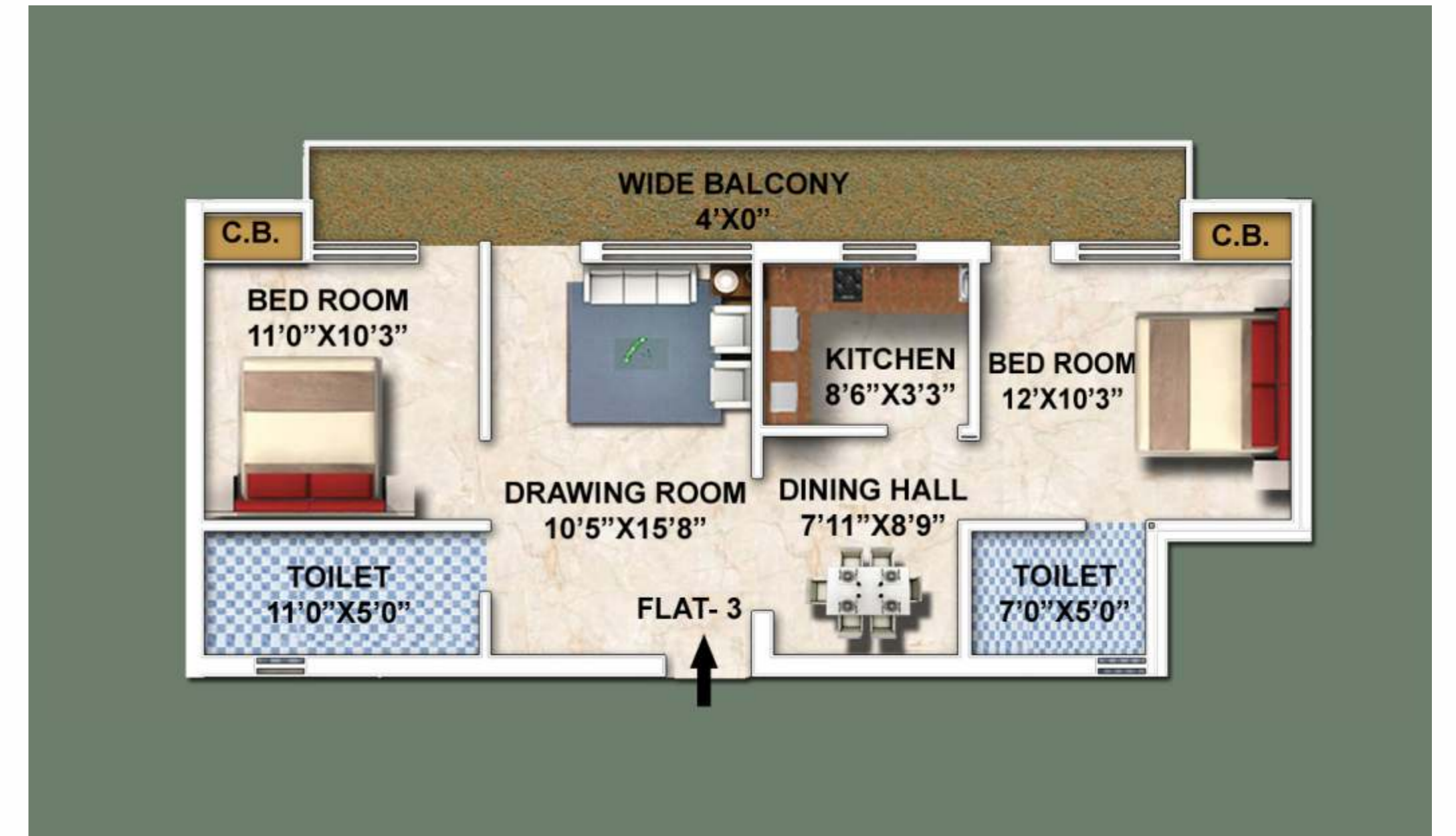
## TYPE - 1 SIZE 3 BHK - 1373 SQFT.



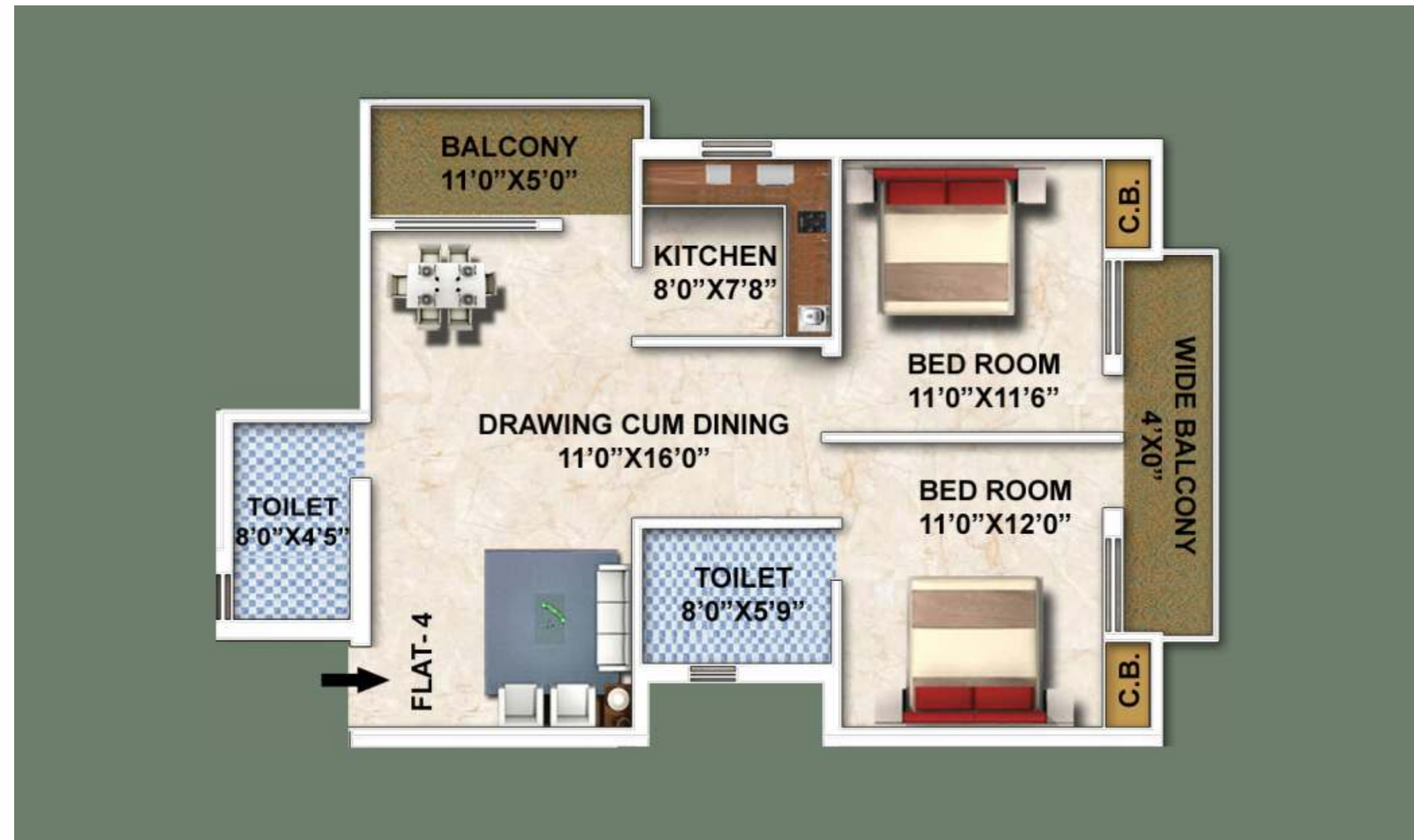
TYPE - 2 SIZE 3 BHK - 1370 SQFT.



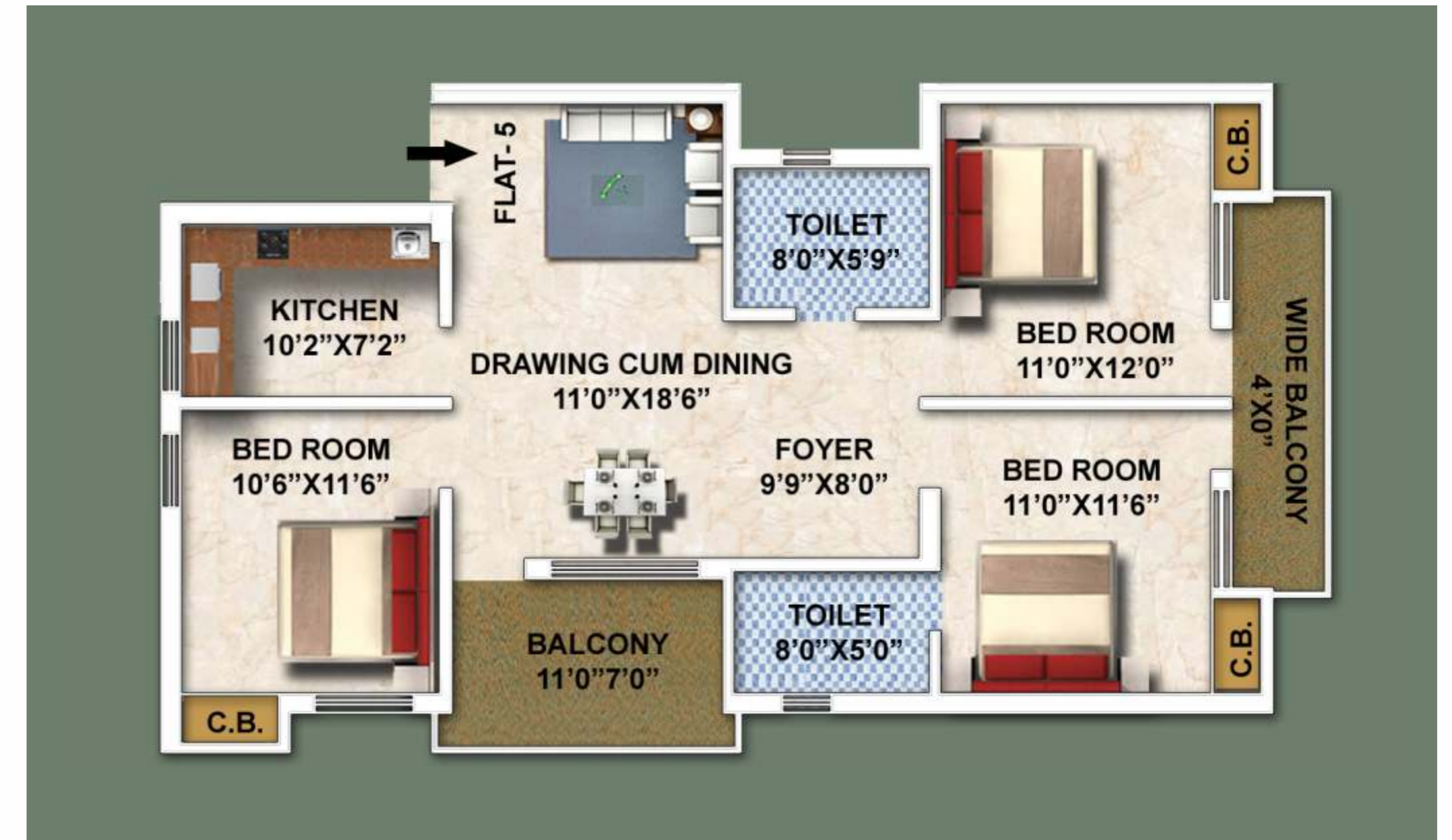
TYPE - 3 SIZE 2 BHK - 1069 SQFT.



TYPE - 4 SIZE 2 BHK - 1145 SQFT.



TYPE - 5 SIZE 3 BHK - 1373 SQFT.



## Apartment Specifications

- COVERED GARDEN WITH FLAT
- ALUMINUM WINDOW
- FLUSH DOOR
- CONCEALED COPPER WIRING
- EARTHQUAKE RESISTANCE FRAMED STRUCTURE.
- VITRIFIED TILES FLOORING
- KOTA STONE/TILES/MARBLE FLOORING IN THE COMMON AREA
- TOILET WALL TIMES UP TO 7' HEIGHT
- CONCEALED PLUMBING IN TOILET & KITCHEN
- INTERNAL WALL P.O.P FINISHED
- 6 PERSON PASSENGER LIFT 1 NO
- 24 HOURS WATER SUPPLY
- EXTERNAL WALL PAINTING WITH SYNTHETIC PAINT
- KITCHEN WITH COUNTER GRANITE/GREEN MARBLE TOP & DADO TILE/ UP TO 2 FEET HEIGHT
- ATTRACTIVE TOP QUALITY MODERN C.P. / SANITARY FITTINGS WITH HOT & COLD WATER PROVISION IN ONE TOILET.
- POWER BACKUPS FOR LIFTS AND COMMON AREAS.
- CONCEALED WIRING WITH ISI MARK COPPER WIRE ONE TV POINT IN LIVING ROOM & AC POINT IN ONE BED ROOM.
- GENERATOR PROVISION WITH AUTO CHANGER (GENERATOR COST WILL BE EXTRA)



## Project Highlights

- Dhanbad NH32 Telgaria More 1.5 km
- St. Xavier's School 2.5 km
- Chinmaya Vidyalaya 2.2 km
- Big Mart 1.1 km
- Airport New Terminal 3.8 km
- Jodhadih Chas market 3.0 km

## Projects Features

- Temple
- GYM
- Kids Pool
- CCTV Camera
- Garden
- Kids Play Area
- 24X7 Security
- Jogging track
- Badminton Court
- Community Hall

