

# Satya

Chambers

 /vyoom.in

# Above & beyond

One of the fastest growing real estate and infrastructure development companies in Ranchi, Jharkhand has gained immense reputation in the market since it began its operations. The company embedded on its remarkable journey 12 years back with a clear vision and mission to meet the aspirations of many by offering quality Homes and Commercial Space. The company is engaged into other business of Stone Mining & Crushing and Jewellery retail. Over the years VYOOM has grown from strength to strength and has completed over 2 lacs Square feet of Commercial, Retail and office spaces. We ensure quality products at the optimum cost and minimum impact to the environment and society at large.



Mr. Nihit Garodia

Mr. Nihit Garodia has played a vital role in the growth of the company through its emphasis on innovation, financial management strategy formulation and overall development of the company. A post graduate from SP Jain institute of management and research he is responsible for the day to day operations of the business.



## Radiating Style & Sophistication

Soaring high above the clean-'n'-green landscape, Satya Chambers easily makes the cut as Ranchi's most coveted commercial address. Exclusivity is the cornerstone of Satya Chambers. Radiating style and sophistication, Satya Chambers is an icon where the buzz is definitely on business growth.

Move to Satya Chambers. It's time to break through the clutter.

Type your text  
Type your text



## Details That Differentiate

Experience the pinnacle of modern business infrastructure with our commercial building. Strategically situated for prime visibility and accessibility, its designer facade distinguishes it as a landmark in the vibrant cityscape. Rest easy with cutting-edge security systems ensuring a safe environment. Complete with ample parking and 100% power backup, convenience is our priority. Start your business journey today and seize the potential for lucrative returns in this hub of opportunity.



Designer Facade



CCTV Surveillance



EV Charging Point



Vertical Landscaped Garden



Centrally Located



Minimum Maintenance Cost



Individual Privacy



Parking Space



100% Power Backup



2 High Speed Elevator

Innovative Spaces,

# Infinite Possibilities



Explore Ranchi's meticulously designed suburban haven,  
**Centrally Situated.**

Discover the epitome of convenience in our centrally located commercial real estate project, just moments away from government offices, the railway station, and the vibrant high street. Elevate your business with unparalleled accessibility and strategic positioning at the heart of Ranchi's bustling hub.



## Seamless Connectivity.

Boost your business with direct access to thriving urban hot-spots.

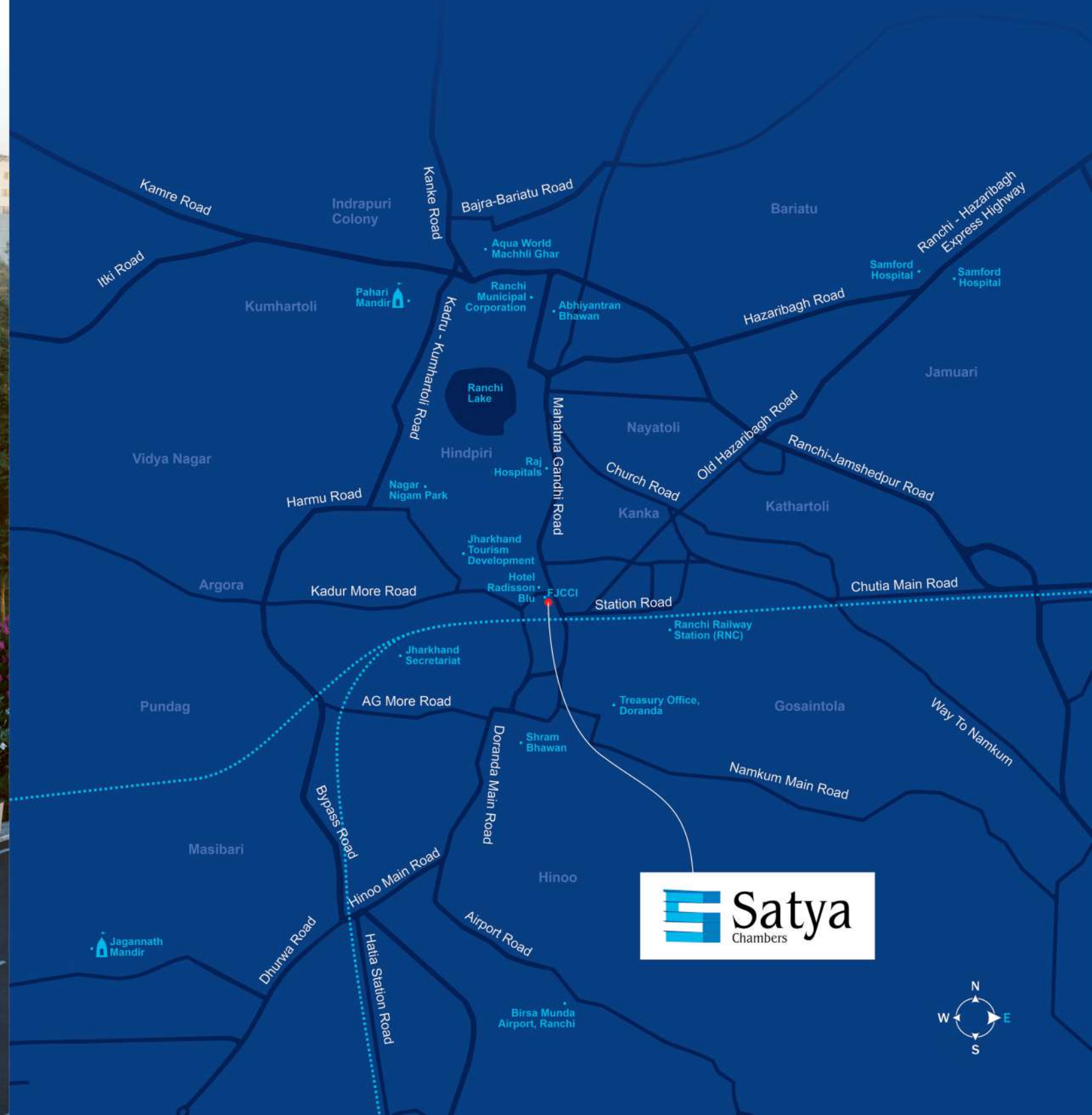
**Hotel Radisson Blu**  
50 meter

**State Bus Depot**  
500 meter

**Ranchi Airport**  
5 km

**Government Offices**  
200 meter

**Ranchi Railway Station**  
1 km



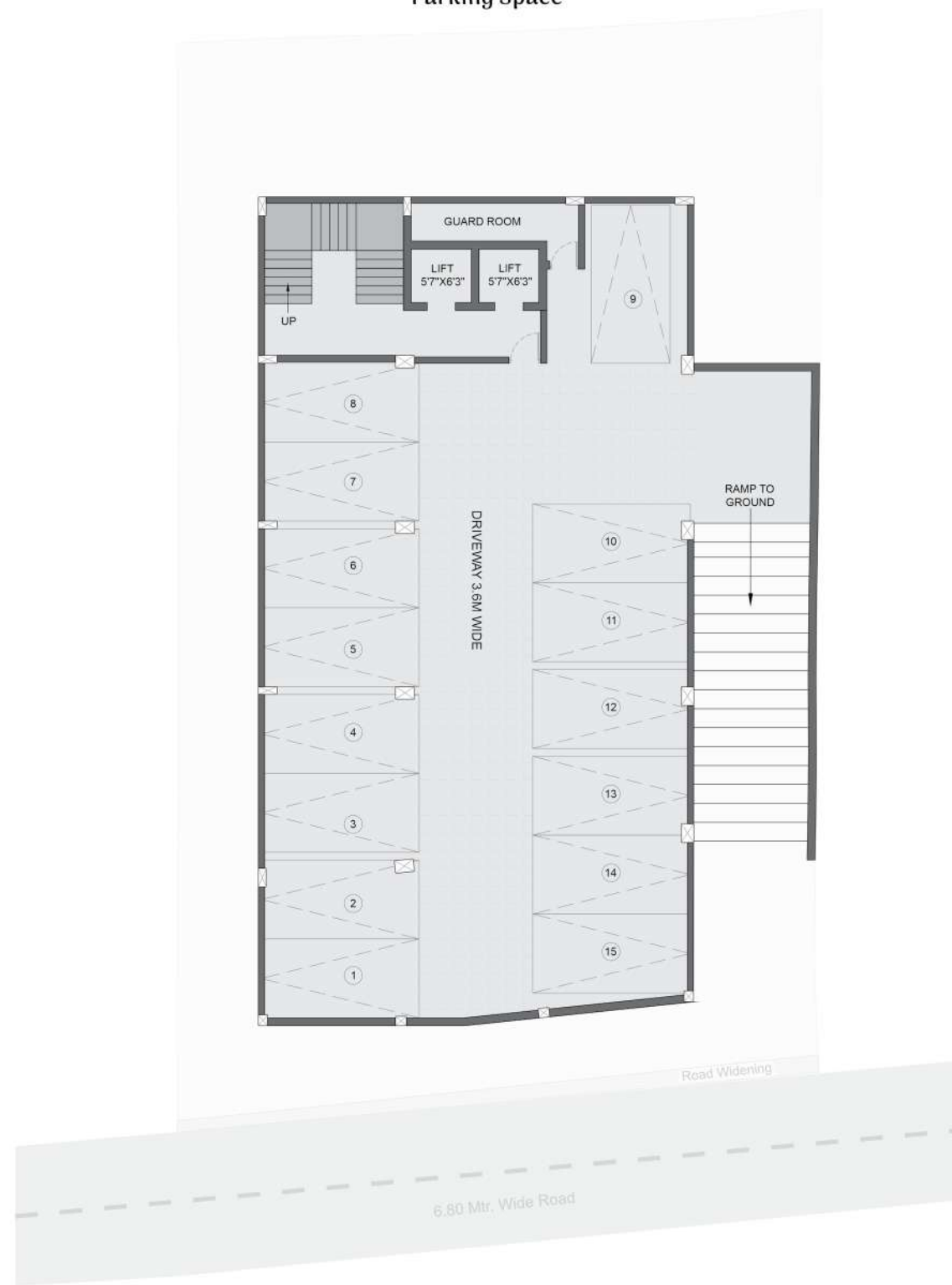
Strategically positioned  
for business advantage.



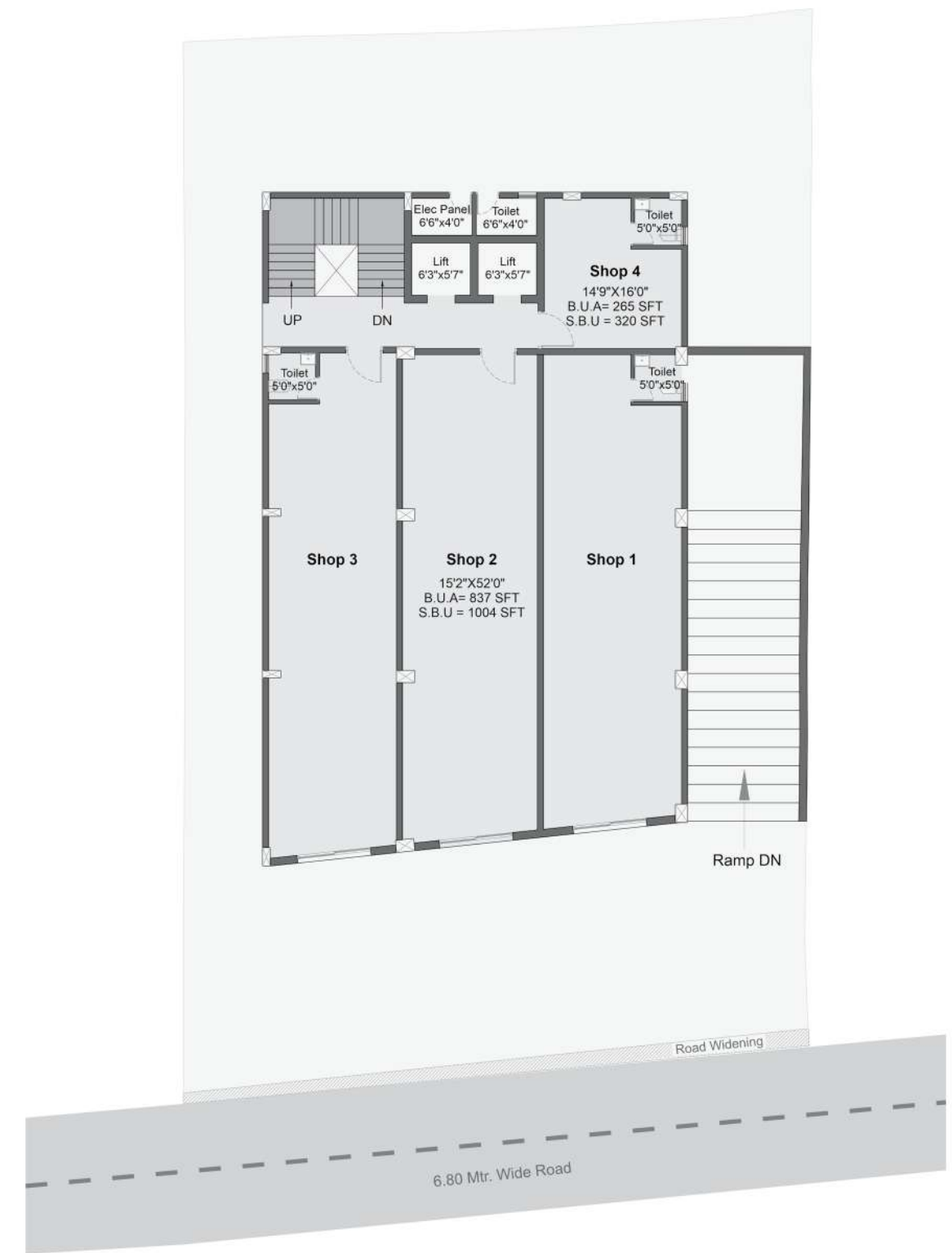
# Unit Plan

## Basement Floor Plan

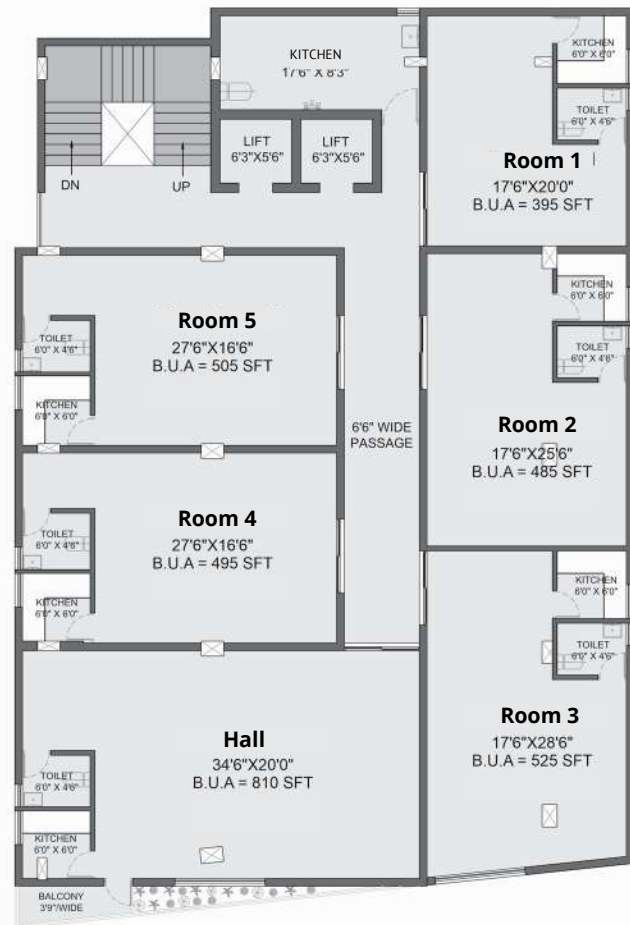
Parking Space



## Ground Floor Plan



## 1st To 4th Floor Plan



## Our Projects



### SKYLINE

Kadru Main Road, Ranchi  
Year Of Completion - 2018



### CENTRIUM

Mahatma Gandhi Road, Ranchi  
Year Of Completion - 2014



### IMPERIA

Main Road, Ranchi  
Year Of Completion - 2015



### PINNACLE

Hinoo, Ranchi  
Year Of Completion - 2013



### CHITRAKOOT

Lower Chutia, Ranchi  
Year Of Completion - On Going

5+  
Completed  
Projects

2+  
On Going  
Projects

12+  
Years  
Experience

180+  
Happy  
Customers



### Unno Realty

-  G-005, Skyline Kadru, Ranchi, Jharkhand - 834002
-  +91-8002685252, +91-9234988389
-  vyoom.info@gmail.com

Rera Registration No.:

| <https://jharera.jharkhand.gov.in>

Disclaimer: Images/Facilities shown above are only representational and informative. Information, images and visuals are only indicative of the envisaged developments and the same are subject to change in actual as per approvals. The views shown in the pictures may vary over period of time and does not guarantee the same. All intending purchaser/s are bound to inspect all plans and approvals and visit project site and apprise themselves of all plans and approvals and other relevant information obtained from me to me from respective authority. The promoter holds no responsibility for its accuracy and shall not be liable to any intending purchaser or any one for the changes / alterations / improvements so made.