



Head Office:

4th Floor, Shri kalyani plaza,
Baliapur Road, Kolakusma,
Dhanbad, Pin Code-828127
Jharkhand



Architects

Abikalpa Design Studio
Triveni Orion, 2nd Floor,
Near Golbuilding, Dhanbad
Contact: +91 9643660451, 011 45458001
Email: kush@abhikalpadesign.com

Web: www.shrikalyani.com Email: sales@shrikalyani.com

For Booking Call: 96614 72378

A Project By



**STAND APART
FROM THE REST!**

**EMBRACE AN
EXCLUSIVE LIFESTYLE !**

**CELEBRATE
YOUR SUCCESS!**

Listen to your heart as the sight draws you close.
An attraction that brings a delighted feeling, stirred
by discovery that you have finally arrived in life.
An arrival to a **Kailasha Apartments** that is
surrounded by the mountains with the
imagination of perfection, a home with comforts
that lets you believe there is paradise on earth !

- ❁ 2,3 and 4 BHK Premium Apartments
- ❁ Exclusive 50 Flats
- ❁ Roof-Top Garden
- ❁ Community Party Lawn
- ❁ Walking Track
- ❁ Open Gym
- ❁ Ample Parking

KAILASHA APARTMENTS in the city

with such a Natural View

for Your

Mind, Body & Soul

Kailasha
2, 3 & 4 BHK Premium Apartments



Site Address:
Near Shri Kalyani Plaza, Baliapur Road (400 metre to Balaji Petrol Pump) Dhanbad



A premium residential project of legend tower with exclusive roof-top garden, open gym and Spacious parking.

Designer Entrance Lobby

Terrace Garden



A blend of exclusivity and style

"Experience stately living of regal times"



High on comfort. High on style.





Every home at **Kailasha** is designed in a way where comforts and space co-exist. Abundant ventilation, natural light and carefully crafted fittings and fixtures make sure that your home is perfect for all-weather living..

The kitchen and dining area encompasses a perfect amount of space to cook, dine and share the love of food. Savor your special dishes with your loved ones and fulfill your food cravings whenever desired...





Unearth plentiful greenery on the rooftop/ garden

-  Elegant Entrance gate
-  Open Gym with workout Area
-  Roof Top Garden
-  Party Lawn

-  Meditation
-  Kids Play Area
-  Senior Citizen Sitouts

MAXIMIZED Specifications

We do not make homes now and then, hence, we have not compromised the essentials not built elements of your interiors. Kailasha is assuring you the premium specifications and appealing aesthetics for your abode.



STRUCTURE
- Earthquake resistant R.C.C framed structure

BRICKWORK
- 5" thick 'AAC' block work internally & externally

PLASTER
- External sand faced cement plaster
- Internal gypsum plaster finish

FLOORING
- 800 mm X 800 mm vitrified flooring for entire flat
- 600 mm X 1200 mm tiles for bathroom dado
- Anti-skid flooring for toilets, bath & attached terraces

WINDOWS
- 2 track powder coated UPVC windows

DOORS
- All doors - decorative laminated flush doors
- Granite door frame for bathrooms and balcony
- Flush door frame for main door & bedroom doors

PAINTING
- Internal primer and putty
- External weather shield acrylic paint

KITCHEN
- Designer wall tiles up to 2 feet
- Granite Kitchen Otta
- Provision for exhaust fan

TOILETS/BATH/WC
- Designer glazed wall tiles up to level in toilets
- Diverter unit in bathroom

PLUMBING
- Concealed plumbing internally (Astral/Finolex/Prince)
- 'Jaquar' or equivalents make C.p fittings
- 'Jaquar' or equivalents make sanitary fixtures

ELECTRIFICATION
- Concealed copper wiring (Polycab)
- 'Roma/Anchor/havells' equivalent modular switches
- Adequate electrical point with circuit breakers
- AC points in all room

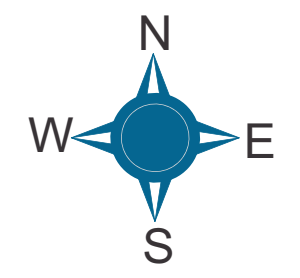
LIFT
- 2 Automatic standard make lifts (Kone/Schindler/Johnson)

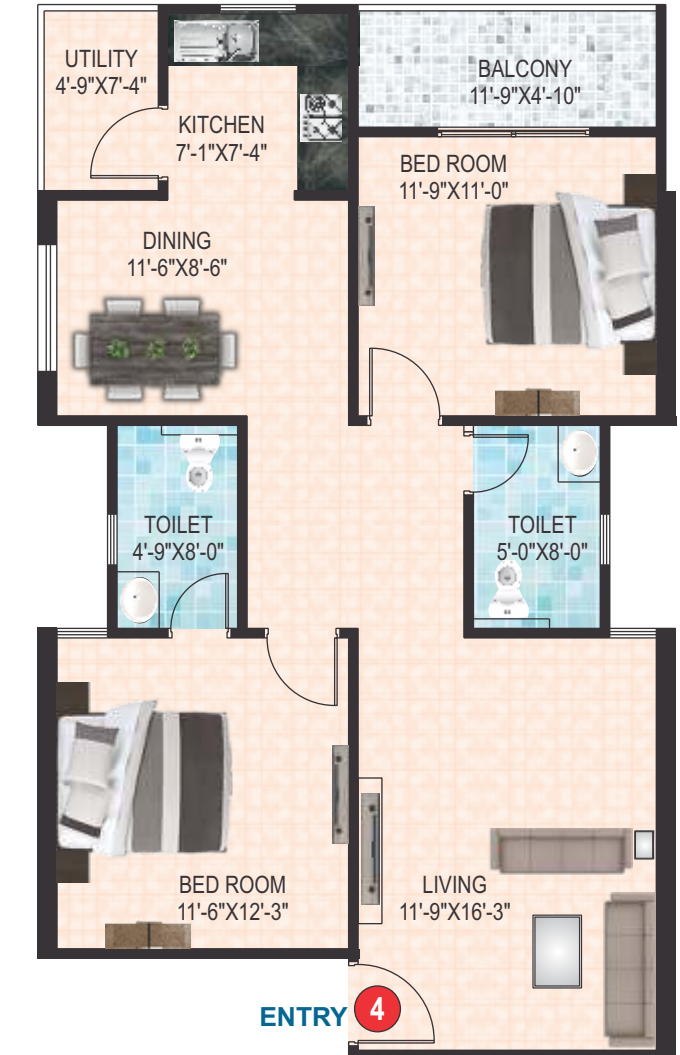
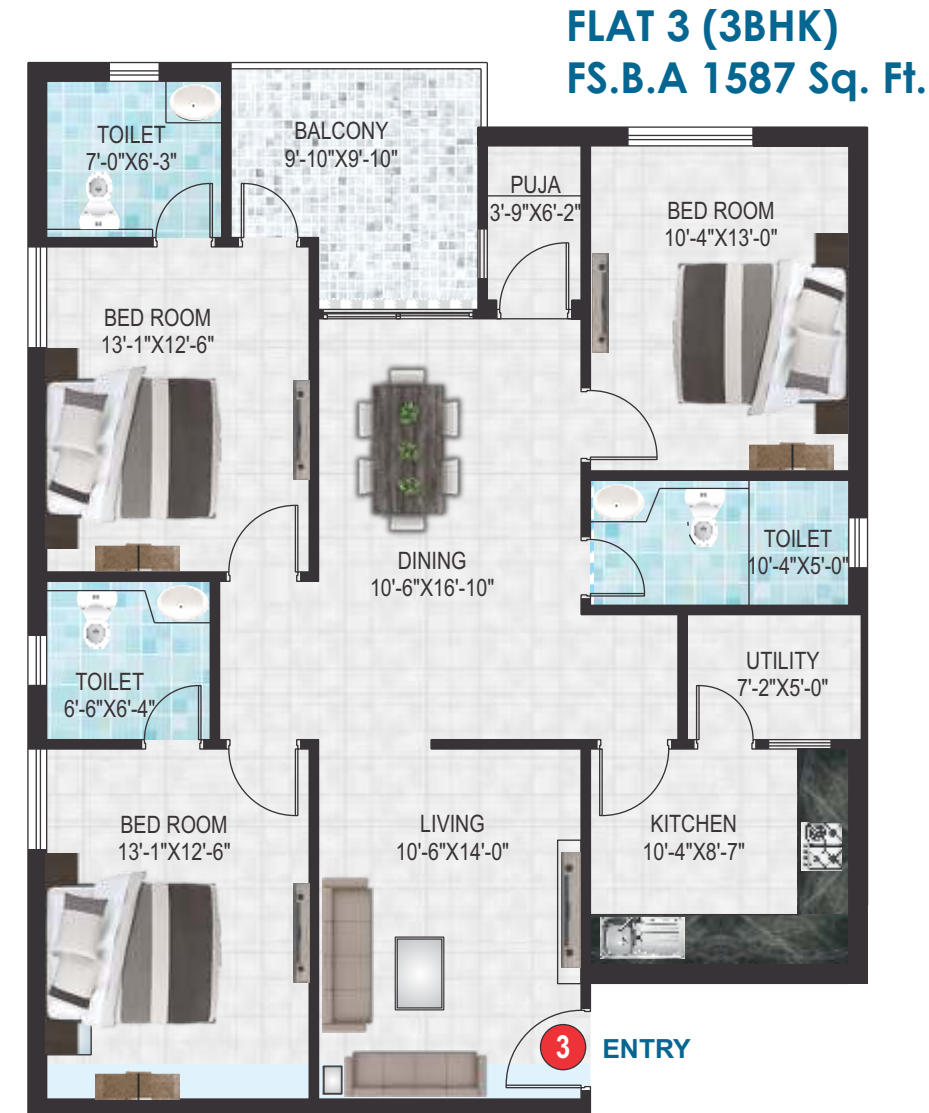
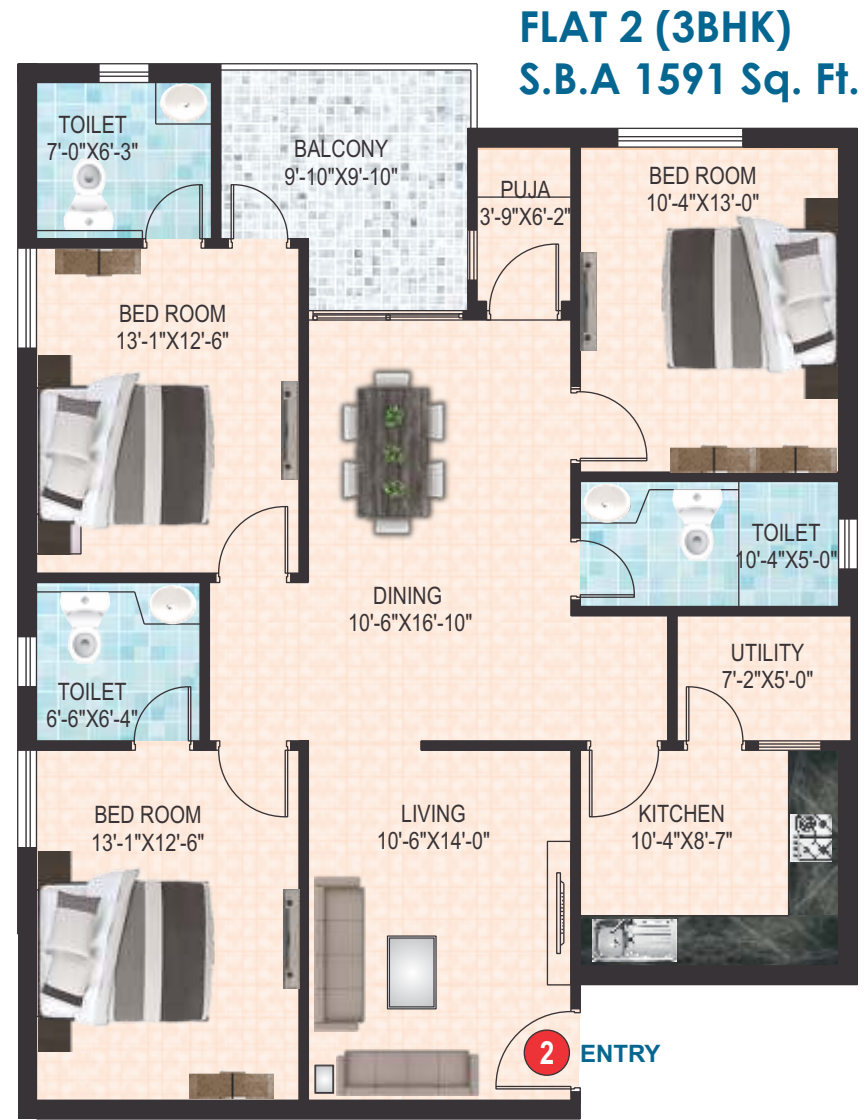
CAMERA
- CCTV camera in common area

The highlights of a happy home

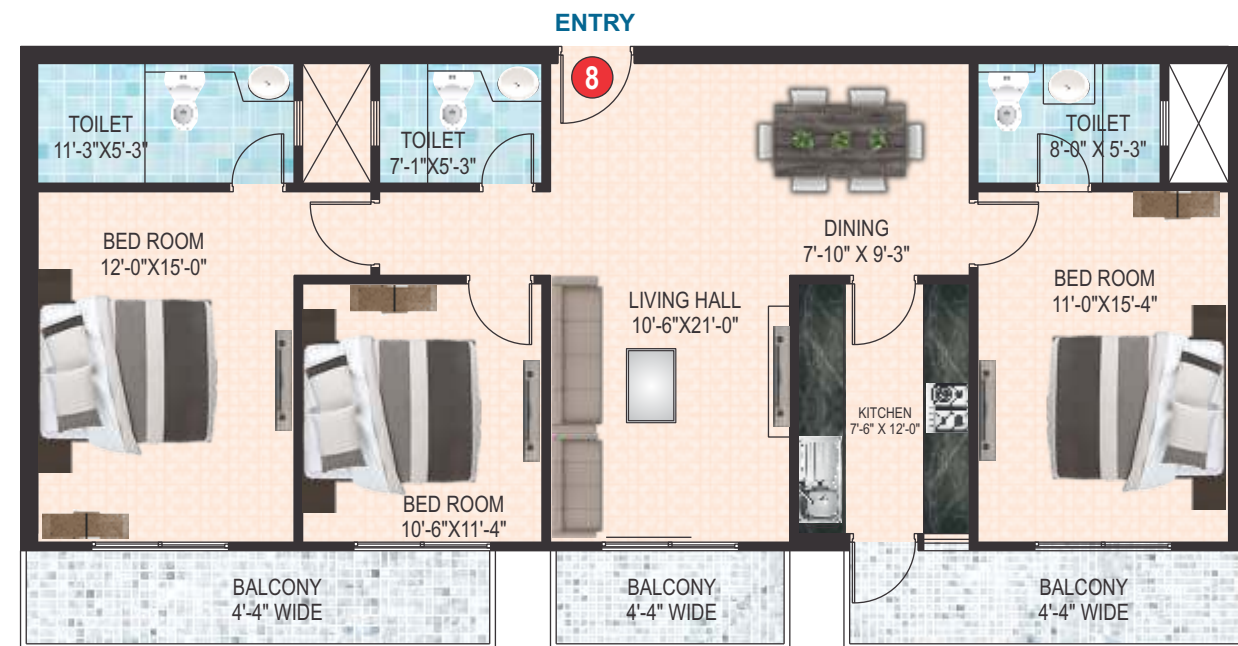
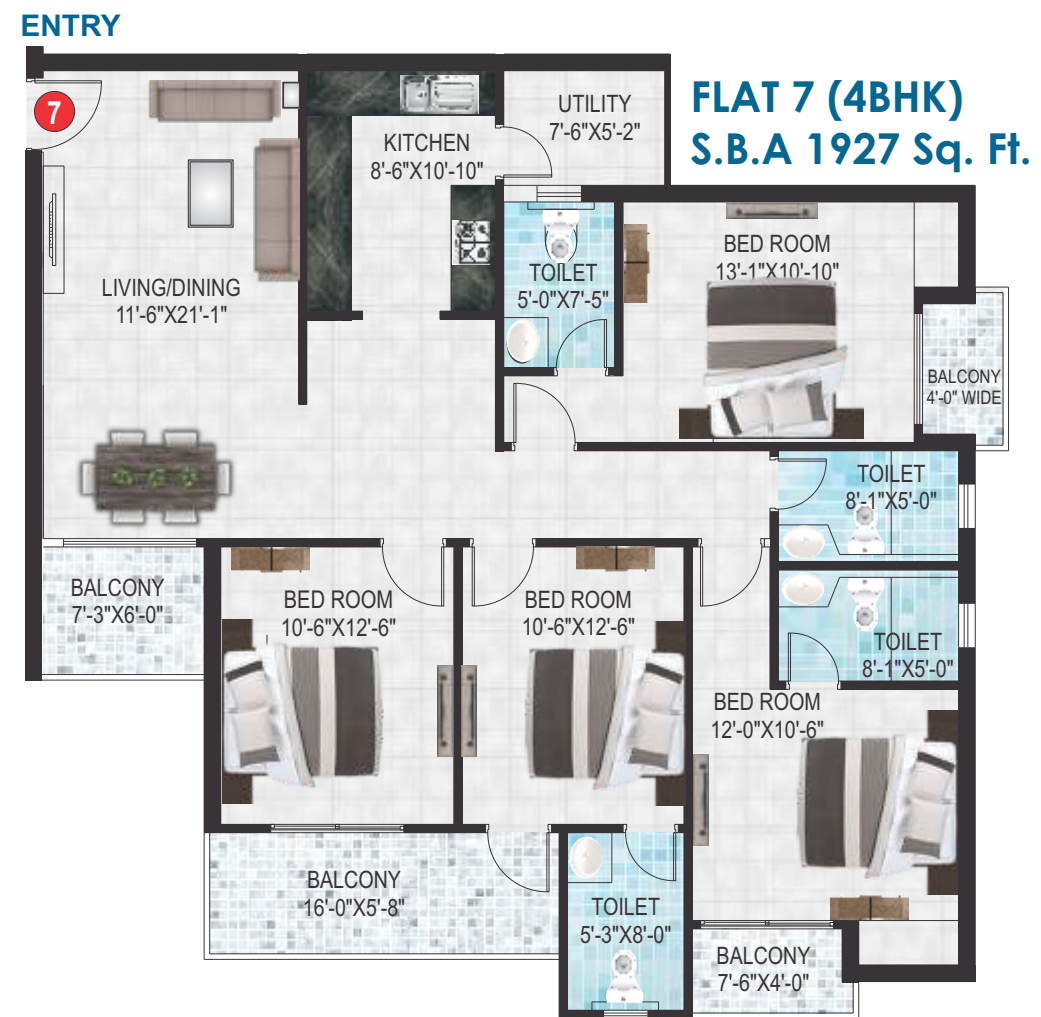
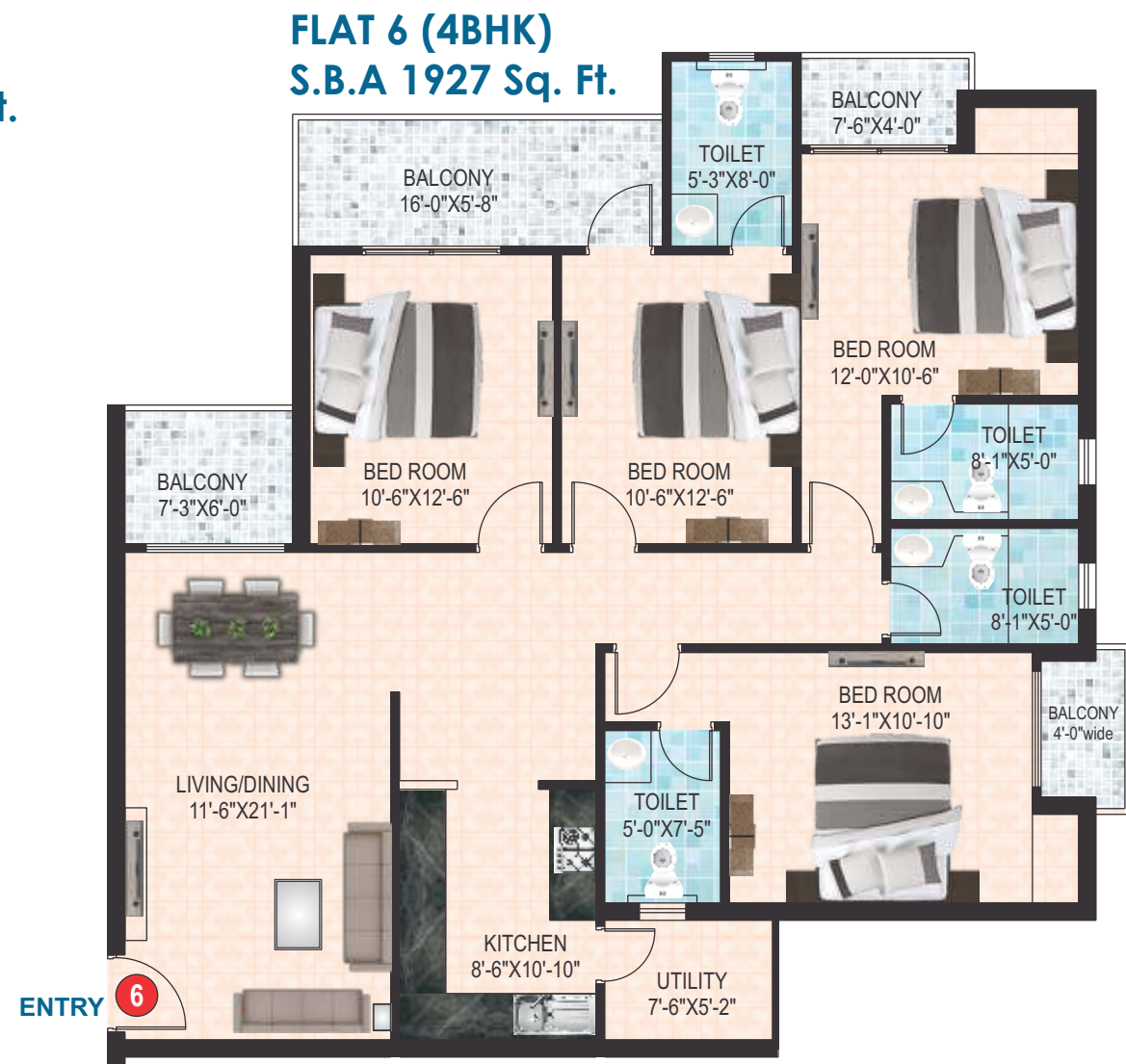
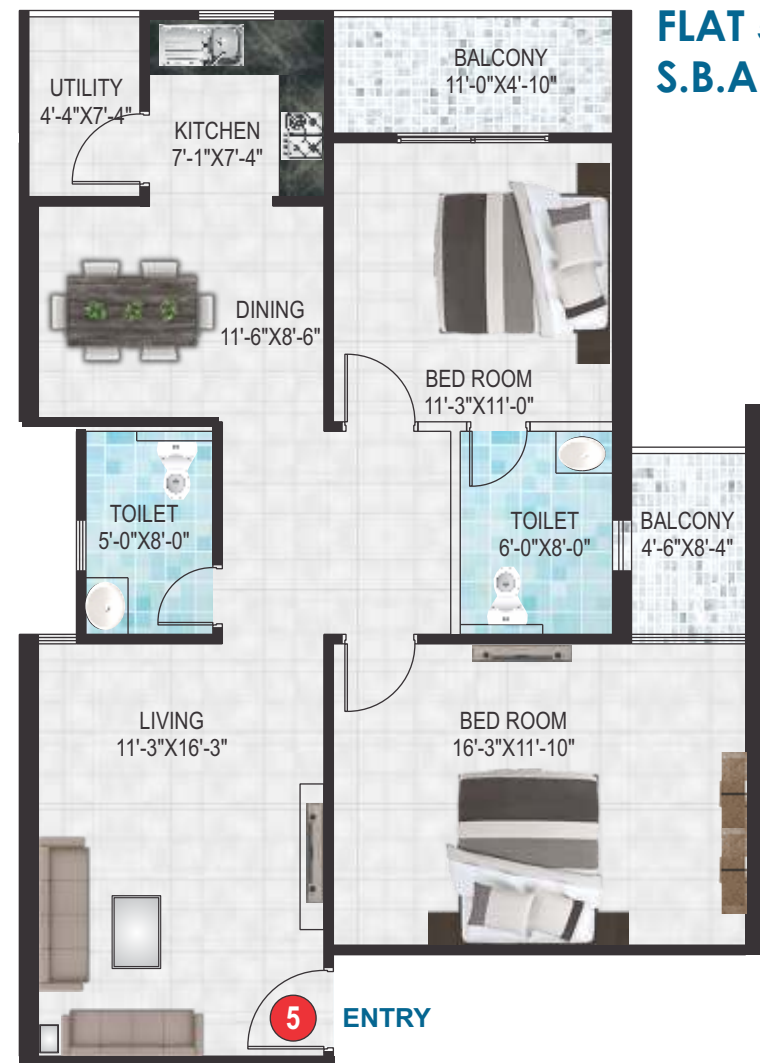


TYPICAL FLOOR PLAN - GROUND TO FOURTH

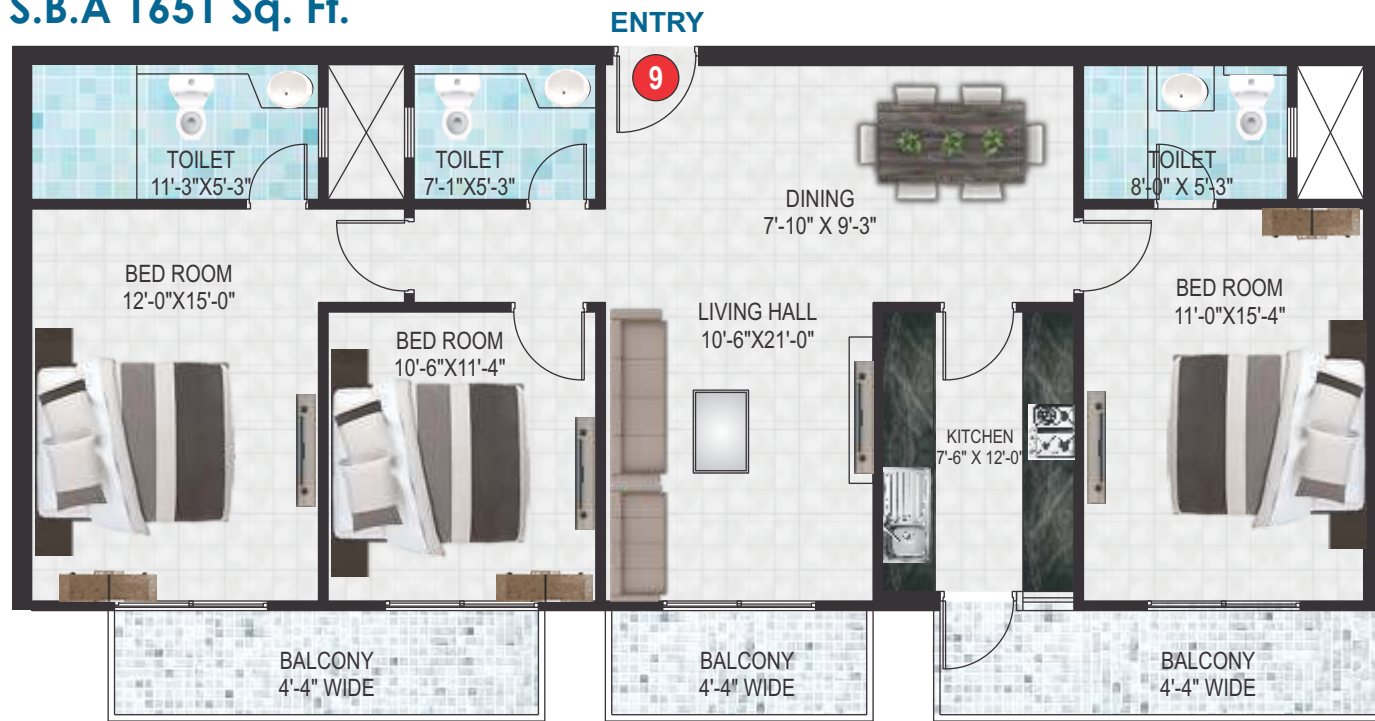




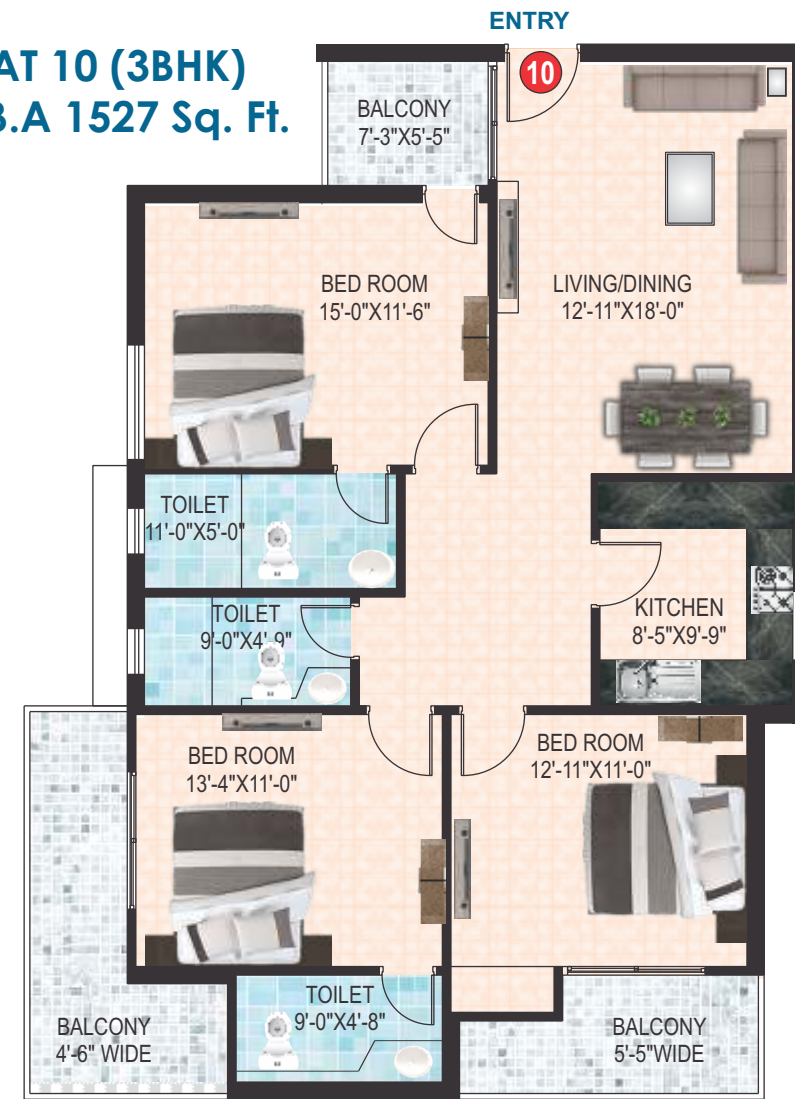
FLAT 4 (2BHK)
S.B.A 1112 Sq. Ft.



FLAT 9 (3BHK)
S.B.A 1651 Sq. Ft.

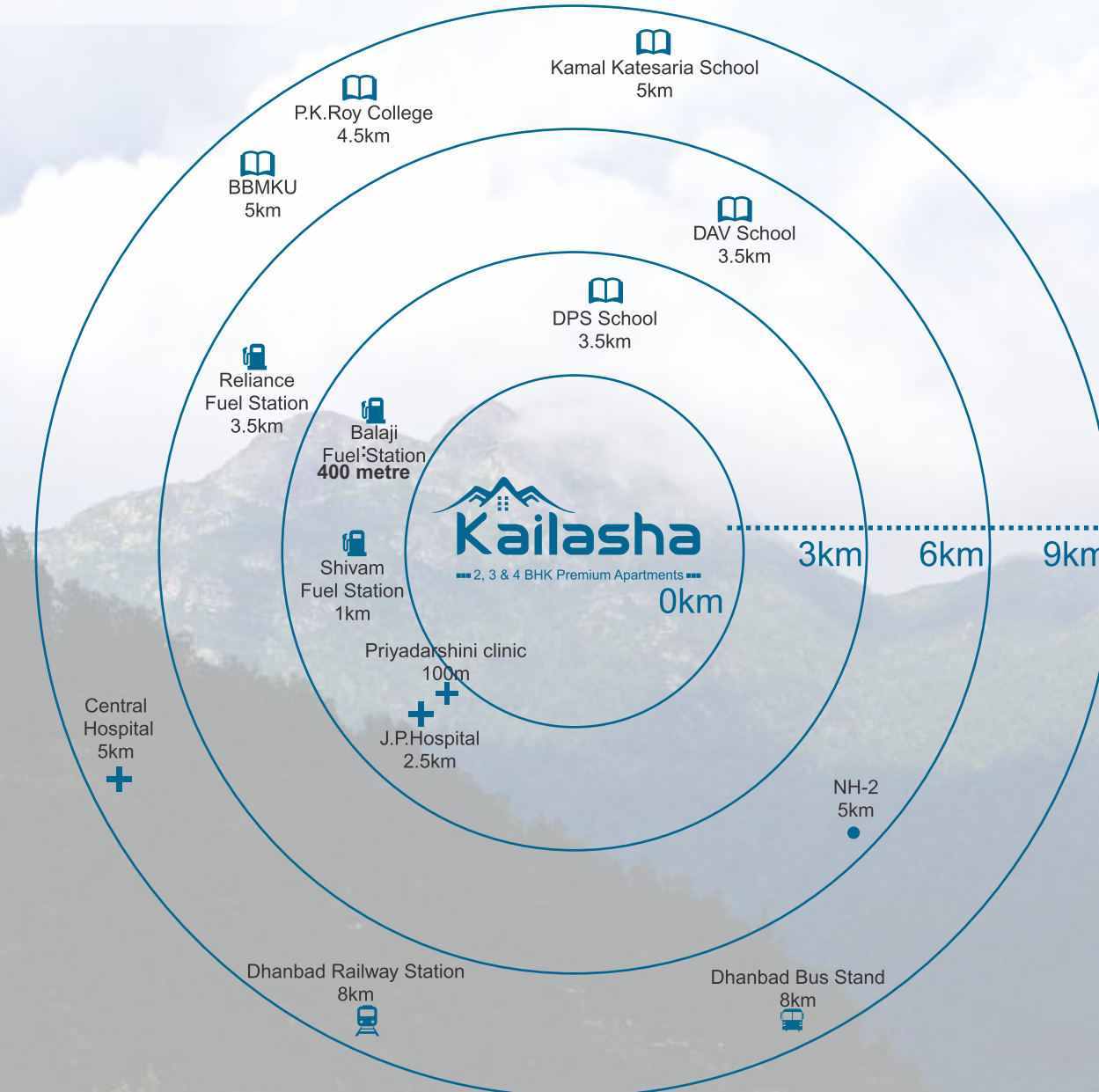


FLAT 10 (3BHK)
S.B.A 1527 Sq. Ft.



Stay close to almost everywhere

- Hospitals
- Schools & Colleges
- Railway Station
- Bus Stand
- Fuel Stations



Site Address:
Near Shri Kalyani Plaza, Baliapur Road
(400 metre to Balaji Petrol Pump) Dhanbad



