

# Anantam Builders

Presents

## **GOPAL ENCLAVE**

A Commercial & Residential Complex



Anantam Builders

Anantam Builders is a benchmark in Residential and Commercial development, which is synonymous with quality, commitment, reliability, and excellence in achievement. The company is aimed at state of art ventures that are impeccable in design and outstanding in standards. We are a real estate company handling residential and commercial projects.

"UNLOCK YOUR DREAMS WITH US"

Regd. Office: Anantam Builders, Laxmi Narayan Tower,  
Flat No. 3/402, Kola Kusma, Hanuman Nagar, Saraidhela, Dhanbad-828109,  
Jharkhand, Mob:-+91 97346 33899 / 92346 61727  
Email: [anantambuilders@gmail.com](mailto:anantambuilders@gmail.com)

## EXCLUSIVE FEATURES FOR AN EXCLUSIVE LIFESTYLE.



### ● Apartment Features:

- 2/3 BHK luxurious Apartments
- Silent D.G. for common areas and lift
- Premium Elevator for 6 persons
- Water harvesting system.24 hours water supply
- Comprehensive firefighting system
- Provision for split A.C. Power Point in all bedrooms
- Separate Living & Dining area
- Vastu Compliant

### ● Structure

- RCC framed structure
- Brick masonry using 1st grade bricks/ ACC blocks.
- External/Internal plaster.
- Permanent textured finish paint on external walls & bricks

### ● Flooring

- Nitko/Kajaria/Rak/Somany make vitrified tiles

### ● Kitchen

- Granite platform with SS sink
- Ceramic tiles up to Lintel level.



### ● Doors

- Laminated designer main door

### ● Windows

- Aluminum windows/ or UPVC (at extra cost)

### ● Wall Finish

- Weather shield external paint/ Bricks tiles cladding
- Distemper on common walls and POP with two coat walls and primer in other walls

### ● Electrification

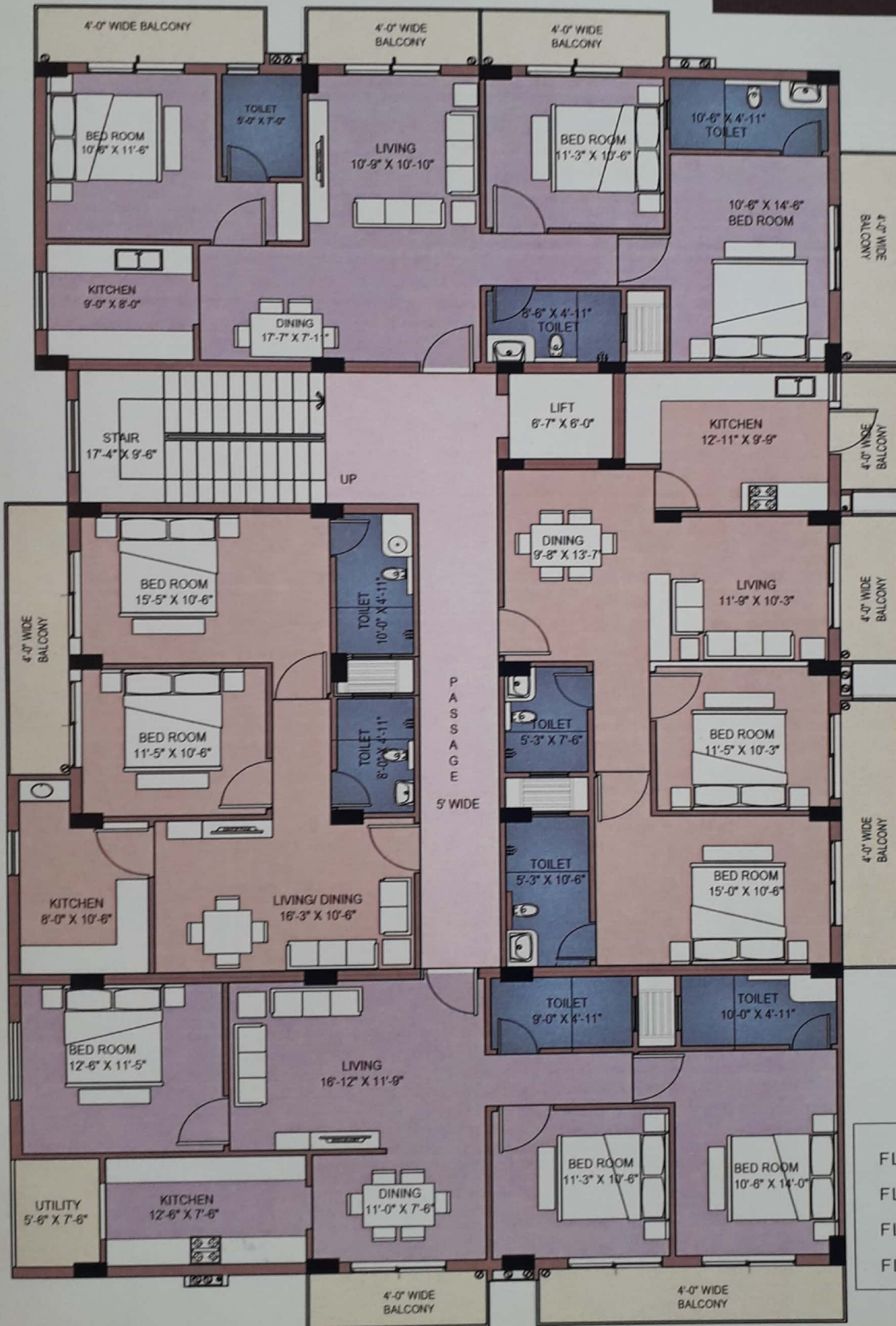
- Connected circuit @ing with ISI mark wire Anchor/Poly cab and modular switches with MCB
- IndoAsian/HPL make DB boxes
- Metering Panel/RMU as per JVVNL norms
- Provision for TV and Broad Band Connection

### ● Bath Rooms

- Designer CP fittings of Jaguar/Marc.
- Sanitary ware of Parry ware/Kohler/American standard/Jaquar



# Typical Floor Plan



FLAT 1	1525 SQFT
FLAT 2	1237 SQFT
FLAT 3	1464 SQFT
FLAT 4	1022 SQFT

Experience the grandeur of generously sized commercial spaces & luxurious Apartments carefully crafted.

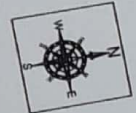
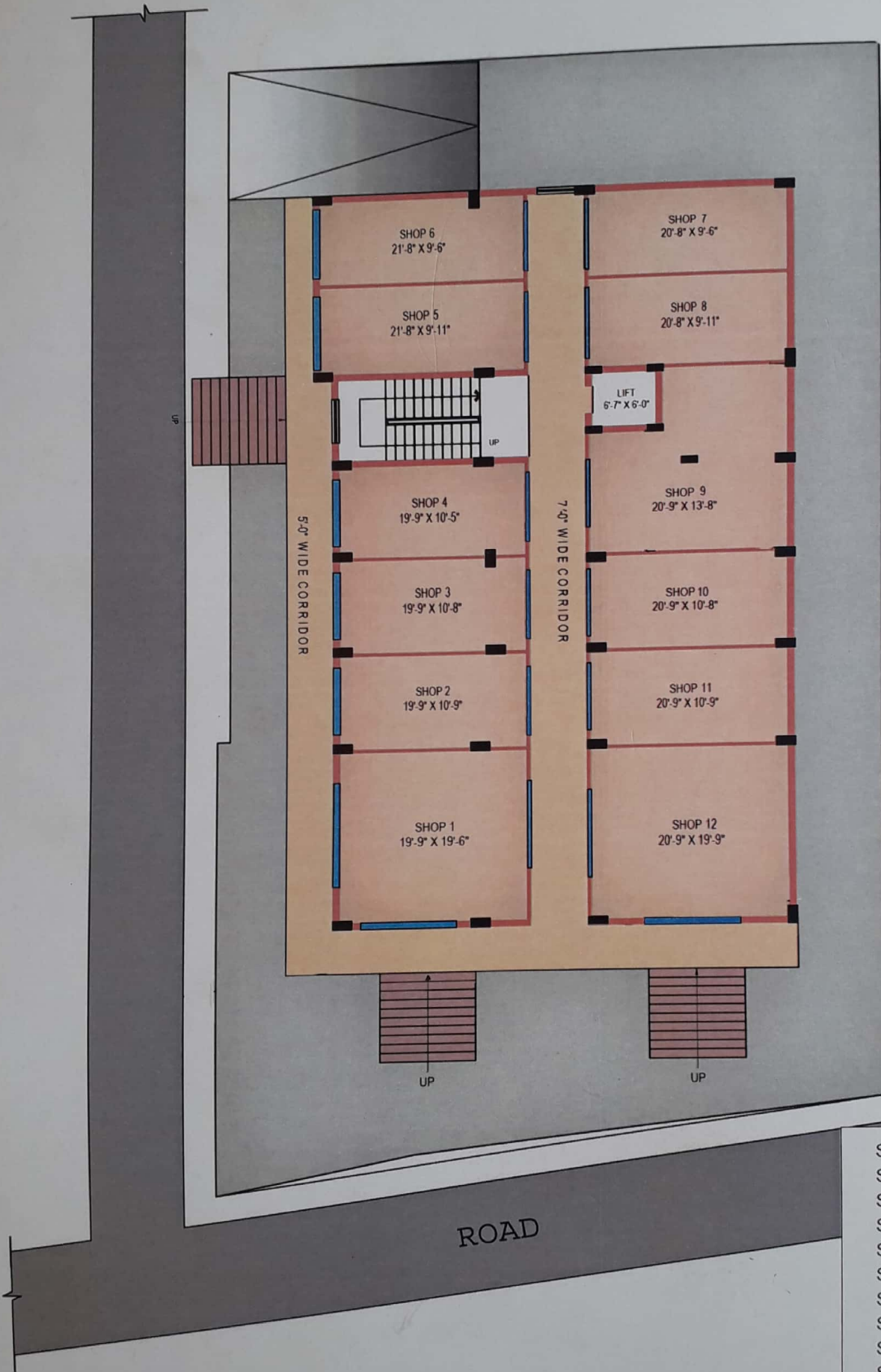
- 2/3 Premier BHK Apartments
- Two sided road view
- Optimal Natural light Wide cross ventilation
- Spacious Balconies
- Premier Elevator for six



Anantam Builders offers luxurious lifestyle with beautifully crafted commercial spaces and lavish apartments transforming your dreams into reality, nestled at the junction of Gandhi Road & Gandhi Nagar near to A.S. Church school, Dharwad

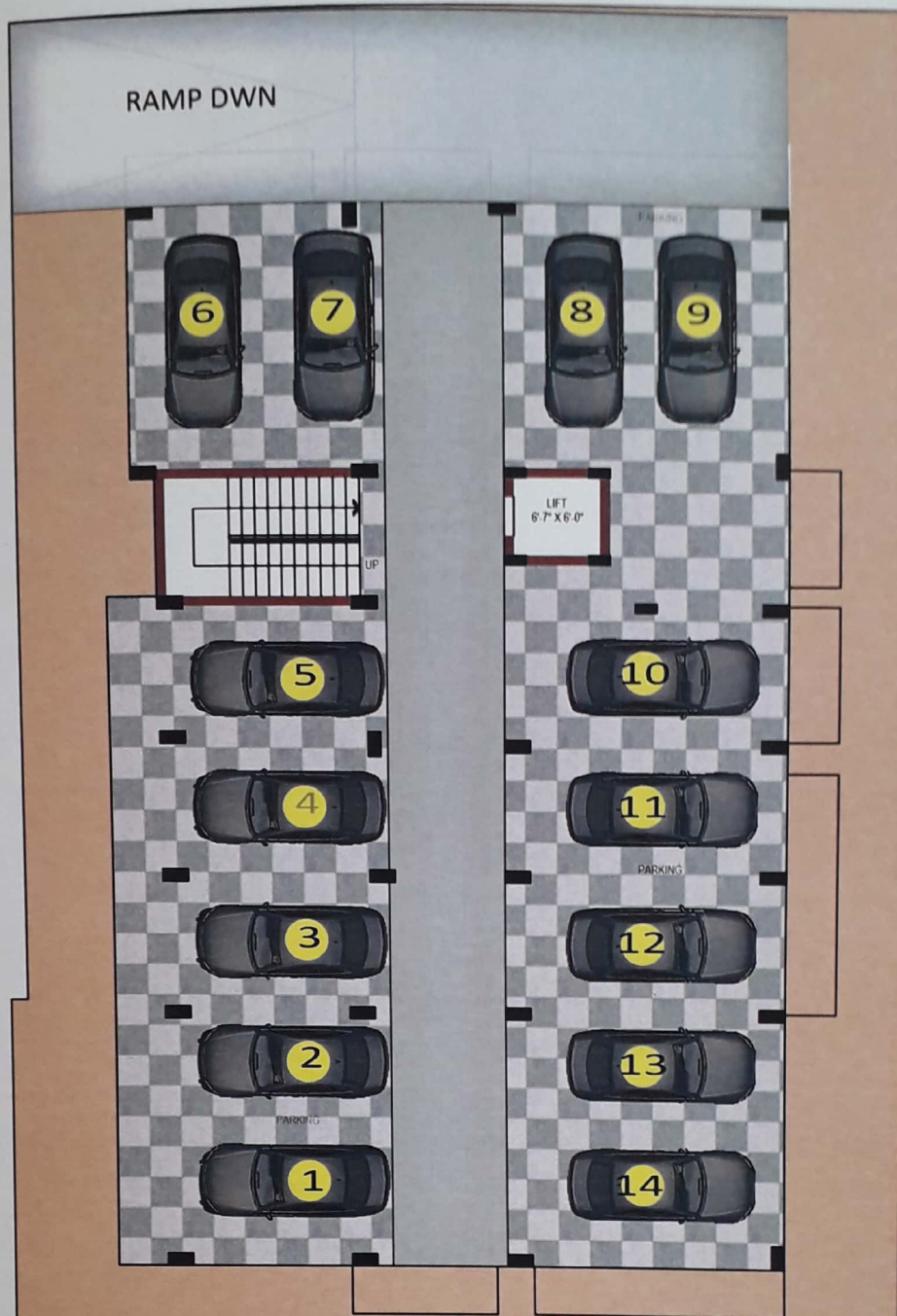


# Ground Floor Plan



Shop 1	505 SQFT
Shop 2	303 SQFT
Shop 3	299 SQFT
Shop 4	299 SQFT
Shop 5	311 SQFT
Shop 6	311 SQFT
Shop 7	298 SQFT
Shop 8	293 SQFT
Shop 9	531 SQFT
Shop 10	312 SQFT
Shop 11	316 SQFT
Shop 12	580 SQFT

# Basement Floor Plan



MAIN ROAD



Anantam Builders

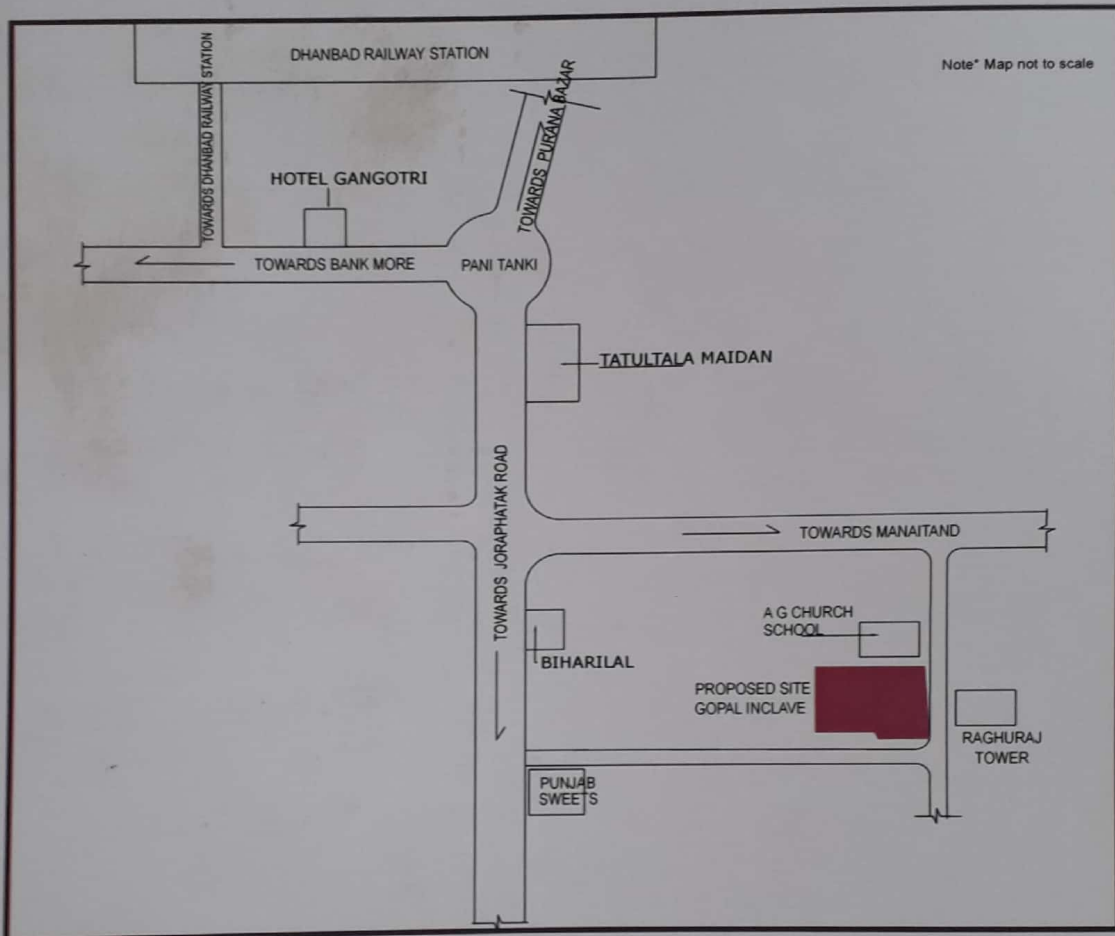
**Location & Site Address**

Gopal Enclave  
Beside A.G. Church, Gandhi Road  
Dhanbad - 826001, Jharkhand  
Email: anantambuilders@gmail.com  
Ph -: 923463 38992- 923466 1727



**Architects**

Abhikalpa Design Studio  
Triveni Orion, 2nd Floor,  
Near Golbuilding, Dhanbad  
Contact: +91 9643660451, 011 45458001  
Email: kush@abhikalpadesign.com



Scan QR Code for  
Location Map

**For Enquiry & Booking**

Please Call +91 91 97346 33899 / 92346 61727

Note: The buyer shall exclusively bear the cost of Registration/GST, or any other applicable taxes, if any. Disclaimer :- Be noted that, the content of this brochure is purely conceptual and for representational purpose only, with no legal binding. Developers reserve the right to amend layout plans, the number of floor, elevation, color scheme, specification, and other amenities without notice.